



COSMO PHARM®

Since 1994

Health from nature®



PRODUCTS ● CATALOGUE



Author: Dr. Aurelia Talpoș
Graphic design: Adapt SRL
Bucharest, 2020

We are COSMO PHARM®



Health from nature®

COSMO PHARM® is a company with a tradition of over 25 years on the Romania's health supplements market, with millions of satisfied customers.

COSMO PHARM® was established in 1994, Bucharest, as an American – Romanian joint venture. Once established, COSMO PHARM® became the first distributor of top U.S. nutritional supplements on the Romanian market.

We act as the sole importer and distributor of U.S. TISHCON CORP., one of the largest nutritional supplement companies in the world, with a portfolio of over 13,000 products marketed in the US and internationally. Moreover, we also collaborate with companies based in Asia and Europe.

In the meantime, from the desire to provide our customers a wide range of products of the highest quality, we have extended our external partnership, collaborating with world-renowned producers: AkerBioMarine™ (Superba²™ Krill Oil), FMC (EPAX® Fish Oil), DSM (resVida® Resveratrol), Kaneka™ (QH™), Sabinsa Corp. and many others.

COSMO PHARM® can offer you: **Health from nature!**



We are passionate about you

The COSMO PHARM® mission is to help those who seek constant balance between health and nature, elaborating more than merely natural supplements.

Each and every product represents the concept of a healthy lifestyle, created by specialists with professional training, inspiration, talent and respect for you.



Inspiration comes from nature

The COSMO PHARM® vision is to make a lasting change, so we are committed to improving quality of life through products that make a difference to the human health. We live in a miraculous world, which evolves towards state-of-the-art technologies, henceforth, we also adapt and evolve every day to make the highest quality products, in order for you to get the results you desire.





OUR VALUES

Integrity and respect - We are convinced that nothing is more important than to offer the highest quality products, all natural, in optimal concentrations. We signed partnerships with specialized international research laboratories and we concentrate on the importance of the bioavailability and efficiency of our supplements.

Community oriented - We take responsibility by expanding our experience and our perspectives, by being involved in our community and promoting health and care for the environment.

Building strong partnerships - We have a priority for each relationship and continuous action in constructing strong organizational culture, oriented towards collegiality. We consider our business partners as strong allies in the fight for a healthy life. We treat them with respect, fairness and integrity.

Continuous communication - We share information, knowledge and constructive advice, and when we have to deal with difficult situations, we empathize, build trust and have courage to solve any issue with honesty and tact.

OUR PRODUCTS

Quality and tradition

UNIQUE, EXCLUSIVE, ORIGINAL AND EFFICIENT PRODUCTS



COSMO PHARM® stands for tradition and quality, products developed by professionals with care and attentively selected ingredients. We present original products in complex formulas, maximum concentrations of natural ingredients, therefore, ensuring best products at unbeatable prices.



Our offer includes unique formulas, the product of many years of research and studies. We were the first to introduce on the Romanian market, in 1994, a revolutionary product for Coenzyme Q10. And nowadays we are the only ones to introduce to our clients the new generation of Coenzyme Q10: Active Q® Ubiquinol - a unique activity of Coenzyme Q10, extracted from QH™ Kaneka™, based on Bio-Solv® technology (TISHCON CORP. exclusive patent).



The **COSMO PHARM®** portfolio has been constantly enriched with dietary supplements covering a wide range of conditions, currently numbering over 100 carefully selected products.

To protect our products from being replicated, we have 47 brands registered at OSIM (The State Office for Inventions and Trademarks), in continuous development. Our protected products carry the ~®~ symbol, the sign of exclusivity.



Our products excel both in the face of the quality requirements imposed by the national authorities, as well as European standards, GMP (Good Manufacturing Criteria Practice) and U.S. FDA (United States Food and Drug Administration).



To maintain the same level of product quality, efficiency, purity and safety, starting 2003, COSMO PHARM® has implemented quality management systems (ISO 9001), environmental management (ISO 14001) and safety management HACCP (ISO 22000). You can find the three ISO logos on all labels of our products.



Our products participate in the Campaign for raising awareness concerning the necessity of increasing the immunity for the entire family, during cold season.



Product recommended by the National Company of Neurology and Psychiatry of the Child and Adolescent in Romania.



EPAX®
Quality
Certificate

Our "Free of" stamps, ensuring high quality products:























VEGETARIAN
friendly

WHY CHOOSE COSMO PHARM ?



- ✓ **The best value for your money, unmatched.**
- ✓ **The guarantee of unique and exclusive products, protected by registered trademarks.**
- ✓ **The guarantee of quality, efficiency, purity and safety, through the three systems ISO implemented.**
- ✓ **The raw material is of the highest quality and purity, from the largest world producers of raw materials for food supplements.**
- ✓ **Maximum bioavailability ensures product efficiency.**
- ✓ **Quality is tested and guaranteed according to international standards.**
- ✓ **The formulas are complex, ideal for covering the daily necessities.**
- ✓ **100% natural, without artificial colours and preservatives.**
- ✓ **Made on the basis of advanced technologies, patented, with the highest quality standards, for maximum efficiency and safety.**
- ✓ **Friendly with the surrounding environment.**
- ✓ **With our products, health is at home.**

	CHILDREN	5
	SISTEM NERVOUS SYSTEM	15
	CARDIO VASCULAR SYSTEM	25
	ANTI-CHOLESTEROL	32
	AMINO ACIDS	37
	VISUAL	40
	OSTEARTICULAR	43
	ENDOCRINE SYSTEM	49
	GASTRO INTESTINAL	51
	DETOXIFICATION	57
	IMMUNITY	62
	URO GENITAL	68
	TONIC & VITALIZING	70
	COUPLE & SEXUALITY	76
	VITAMINS & MINERALS	78
	ANTIOXIDANTS	82
	BEAUTY & FEMINITY	84
	RECOMMENDATIONS ACCORDING TO DISEASE	90
	THE ROLE OF VITAMINS IN THE BODY	93
	RANGE OF PRODUCTS	95

*Imaginile produselor sunt cu titlu de prezentare.
COSMO PHARM® își rezervă dreptul de a modifica/actualiza informațiile ce figurează în prezentul catalog.*

Suplimentele alimentare nu înlocuiesc o dietă variată și echilibrată și un mod de viață sănătos. A nu se depăși doza recomandată pentru consumul zilnic. A nu se lăsa la îndemâna copiilor mici. Nerecomandat persoanelor alergice la oricare dintre ingrediente.

CHILDREN



advanced kids®

125 ml



30 tb



CALCIUM + D₃ + B₁₂

Syrup for children

The complex of vitamins and calcium, with natural wild strawberry flavour, ensures the optimal need for a harmonious development of children's bone system. During development, a child needs a significant intake of Calcium and Vitamin D3 which is difficult to provide by food alone.

Actions:

- Calcium is essential for bone and teeth health. It intervenes in the process of muscle contraction - relaxation, but also in the transmission of nerve impulses.
- It supports the harmonious development of the osteoarticular system especially when the absorption is insufficient or the need is increased.
- It contributes to blood coagulation, the proper functioning of the heart, blood vessels, nervous and muscle systems.
- Vitamin D3 helps to strengthen immunity, increases calcium absorption and its settling in the bones.
- Vitamin B12 intervenes in maintaining mental health and the normal formation of red blood cells.

Beneficial in:

Rickets, hypocalcaemia, decalcification, fractures, convalescence, asthenia, anorexia and weakness; megaloblastic Anaemia, loss of appetite, malabsorption syndrome, convalescence.

Active ingredients / 10 ml: Calcium – 120 mg, Vitamin D3 – 5 mcg, Vitamin B12 – 2 mcg.

Administration: from 6 months to 5 years old – 5 ml (one teaspoon) per day, in the morning, after food; over 5 years old – 10 ml (2 teaspoons) per day in the morning, after food. Shake before using. It can be ingested as such or diluted in water or other beverage. Contraindicated for people who are allergic to any of the components of the product! Once opened use within 2 months.

Packaging form: 125 ml flask.

Chewable CALCIUM

POWER WITH CHOCOLATE TASTE!

Calcium is a very important element in the growth, development and maintenance of the osteoarticular, muscular, cardiovascular and nervous systems. The chewable form is suitable especially for people who have difficulty in swallowing tablets or who want a pleasant way to consume calcium.

Actions:

- It maintains the health of the bone system and teeth.
- It contributes to normal blood coagulation.
- It supports energy metabolism.
- It is indispensable for the normal functioning of the muscular system and for the activity of the nervous system.
- It is an important factor in the permeability of the cell membrane.
- It participates in the process of protein synthesis.
- It supports the functioning of digestive enzymes and the elimination of acidic residues.

Beneficial in:

Hypocalcemia, calcium deficiency, decalcification, osteoporosis, rickets, tooth decay, absorption, coagulation disorders, immune system support, etc.

Active Ingredients / Tablet: Calcium - 200 mg

Administration: Children over 4 years old, adults, the elderly: chew 1 – 4 Tablets a day.

Packaging form: Flask with 30 chewable tablets a day.



VEGETARIAN
friendly



VEGETARIAN
friendly

30
cps

DHA PREMIUM

EPAX Fish Oil

Chewable Tablets with natural taste of berries

Also known as "intelligence fats" or "brain bricks", **DHA** (docosahexaenoic acid) and **EPA** (eicosapentaenoic acid) contribute to brain formation and mental health.

Significant quantities of DHA are found in the brain and retina, so the constant intake of Omega 3 fatty acids ensure their optimal functioning.

In the first year of a child's life, the size of the brain doubles. DHA and EPA supplementation is necessary because these fatty acids cannot be produced by the human body.

Actions:

- It helps to develop children's intelligence by improving cognitive performance.
- It supports memory and ability to focus.
- It is essential for the proper functioning of the child's nervous system and mental health.
- It helps to maintain normal vision and normal brain function.
- It contributes to the normal functioning of the cardiovascular system.
- DHA along with vitamin C and vitamin D3 helps the normal functioning of the immune system.
- Vitamin E helps to protect cells against oxidative stress.
- Vitamin D3 helps in the normal absorption of calcium and phosphorus and in maintaining the health of the skeletal system.

Beneficial in:

Supporting the immune system, supporting cognitive processes (concentration, memory), ADHD (attention deficit hyperactivity disorder), dyslexia, dyslalia, emotional instability, behavioural disorders, allergies, etc.

Active Ingredients / Chewable Tablet: EPAX Fish Oil – 290 mg, of which DHA – 125 mg, EPA – 26 mg, Total Omega 3 – 174 mg; Vitamin C – 26 mg, Vitamin E – 1.5 mg, Vitamin A – 200 mcg, Vitamin D3 – 2.5 mcg.

Administration: Children over 3 years old, pregnant women, adults, the elderly: 1 – 2 chewable Tablets per day.

Packaging form: Flask with 30 chewable tablets.

**DEVELOPS
CHILDREN'S
INTELLIGENCE**





IMUNOSTIM® JUNIOR

Syrup for children

A complex combination of extracts with special therapeutic properties, in a set of optimal concentrations, which supports the strengthening of the child's immune system.

Actions:

- It ensures the normal functioning of the immune and nervous systems.
- It reduces the risk of contracting viruses and flu.
- It complements and shortens antibiotic treatments for recurrent infections.
- It is efficient in the treatment of acute upper respiratory tract infections.
- It supports normal energy metabolism.
- It contributes to maintaining mental health.
- It helps to protect cells from oxidative stress.
- It stimulates defence mechanisms in situations of immune vulnerability.

Beneficial in:

Low immunity, colds, viruses, flu, sinusitis, laryngitis, bronchitis, urinary tract infections, digestive disorders, etc.

Active Ingredients / 10 ml: Elderberry Extract – 1400 mg, Linden flower Extract – 1400 mg, Honey – 800 mg, Acerola cherry Extract – 172.8 mg, of which Vitamin C – 43.20 mg; Propolis Extract – 50 mg, Bromelain – 40 mg, Papain – 40 mg.

Administration: from 6 months to 5 years old – 5 ml (one teaspoon) per day, in the morning; over 5 years old – 10 ml (2 teaspoons) per day, in the morning, after food. Shake before using. It can be taken as such or diluted in water or other beverage. Contraindicated for people who are allergic to any of the components of the product! Once opened use within 2 months.

Packaging form: 125 ml flask.



ALERGO JUNIOR

Syrup for children

A natural plant product, efficient and delicious, with a pleasant raspberry taste, which fights children's allergies and skin, mucous membrane and respiratory tract infections.

Actions:

- It modulates the immune system, and inhibits the reactions that generate allergic manifestations.
- Antiseptic and natural anti-inflammatory, it prevents exacerbation of allergic diseases with an infectious component.
- Emollient of the respiratory mucosa, it soothes mouth, pharyngeal and tracheobronchial irritations, dry cough, it promotes expectoration and elimination of allergenic factors from the respiratory tract.

Beneficial in:

Allergies and skin conditions: urticaria, atopic dermatitis, eczema, bedsores, wounds, etc.

Allergies and respiratory diseases: allergic rhinitis, vasomotor, respiratory mucosa irritations, dry cough, asthmatic bronchitis, asthma, respiratory infections (colds, pharyngitis, laryngitis, tracheobronchitis), etc. Eye allergies: blepharitis, conjunctivitis.

Active Ingredients / 10 ml: Nettle / *Urtica dioica* extract – 2,000 mg; Blackcurrant / *Ribes nigrum* Extract – 2,000 mg; Purple coneflower/ *Echinacea purpurea* extract – 1,200 mg; Eglantine / *Rosa canina* Extract – 2,000 mg; Citric acid (antacids); Plantain / *Plantago lanceolata* extract – 8 mg.

Administration: from 6 months to 5 years old: 5 ml (1 teaspoon) per day; over 5 years old: 10 ml (2 teaspoons) per day. Shake before using. It can be taken as such or diluted in water or other beverage. Contraindicated for people who are allergic to any of the components of the product! Once opened use within 2 months.

Packaging form: 125 ml flask.



SUGAR
FREE

VEGETARIAN
friendly



SUGAR
FREE

NO
ALLERGENS

VEGETARIAN
friendly

125
ml125
ml

SLEEPY HEAD

Syrup for children

Complex of active, natural and effective ingredients, with a taste of blackberries and raspberries, which facilitates falling asleep easily.

Actions:

- It ensures a good quality, deep sleep.
- It contributes to physical and mental relaxation.
- It reduces nocturnal agitation and awakenings.
- It supports emotional balance.
- It regulates the body's biological processes.

Beneficial in:

Agitation, irritability, insomnia, nocturnal awakenings, discomfort related to colic or teeth eruption, etc.

Active Ingredients / 10 ml: aqueous extracts of: Linden flower (*Tilia sylvestris*) – 1000 mg; Lemon balm (*Melissa officinalis*) leaves – 1000 mg; Bitter orange petals (*Citrus aurantium*) – 1000 mg; hop cones (*Humulus lupulus*) – 1000 mg; Vervain (*Verbena officinalis*) leaves 1000 mg; Lavender (*Lavandula angustifolia*) flowers – 1000 mg; Concentrated juices of blueberry and raspberry, honey.

Administration: from 6 months to 5 years old - 5 ml (one teaspoon) per day, in the evening; over 5 years old - 10 ml (2 teaspoons) per day in the evening. Shake before using. It can be taken as such or diluted in water or other beverage.

Contraindicated for people allergic to any of the components of the product! Once opened use within 2 months.

Packaging form: 125 ml flask.

NOSE & THROAT

Syrup for children

Made of high quality natural raw materials, it contributes to restoring the health of the respiratory tract.

Actions:

- It stimulates defence mechanisms and speeds up restoration of the health of the respiratory tract.
- It complements and shortens antibiotic treatments for recurrent infections.
- It protects, moisturises and soothes the mucosa of the mouth and throat.
- It contributes in calming coughs and promotes expectoration.
- It has an antimicrobial effect.

Beneficial in:

Colds, viruses, laryngitis, stuffy nose, dry cough, productive cough, bronchitis, pneumonia.

Active Ingredients (20 ml): Eucalyptus extract – 16,000 mg, Pine extract – 400 mg, Mallow extract – 400 mg, Marshmallow Extract – 400 mg, Purple coneflower Extract – 400 mg, Dense-flowered mullein Extract – 400 mg.

Administration: from 6 months to 5 years old - 10 ml (2 teaspoons) per day, in the morning; over 5 years old - 20 ml (4 teaspoons) per day in the morning. Shake before using. It can be taken as such or diluted in water or other beverage. Contraindicated for people who are allergic to any of the components of the product! Once opened use within 2 months.

Packaging form: 125 ml flask.

SUGAR
FREENO
ALLERGENSVEGETARIAN
friendlySUGAR
FREENO
ALLERGENSVEGETARIAN
friendly

*A strong immune system
is built in time!*



THE DELICIOUS SYRUPS

Fight viruses and bacteria

Boost the immune system

Fight off the flu symptoms

Speed up the healing process



BABY TUSIN

Syrup for children

Optimal combination of active ingredients with a pleasant caramel taste, it calms the mucous membranes of the airways, reduces the intensity of dry cough and promotes expectoration due to the anti-inflammatory and emollient properties of plantain and volatile oil of thyme.

Actions:

- It stimulates salivary secretion, removes dryness and reduces the intensity of dry cough
- Emollient of the respiratory mucosa, it soothes mouth, pharyngeal, tracheobronchial and dry cough irritations and promotes expectoration and elimination of impurities and pathogens from the airways.
- It helps to eliminate toxins from tissues and has a purifying effect.
- It stimulates the healing of airway injuries and shortens the duration of irritative cough.

Beneficial in:

Respiratory infections (rhinitis, pharyngitis, laryngitis, tracheobronchitis); allergies and respiratory ailments accompanied by dry cough: irritation of the respiratory mucosa, asthmatic bronchitis, asthma; digestive disorders (dyspepsia, etc.).

Active Ingredients /10 ml: 4: 1 Extract of Plantain/*Plantago lanceolata* – 10 mg; Extract 4: 1 of Thyme/*Thymus vulgaris* – 10 mg. It does not contain allergens.

Administration: from 6 months to 5 years: 5 ml (1 teaspoon) per day; over 5 years: 10 ml (2 teaspoons) per day. Shake before using. It can be taken as such or diluted in water or other beverage. Contraindicated for people who are allergic to any of the components of the product! Once opened use within 2 months.

Packaging form: 125 ml flask.



VITAMIN C natural

Syrup for children

It is a rich natural source of Vitamin C from Acerola cherry, as well as from eglantine and black currant fruits, which provide an additional supply of vitamins. The pineapple taste of the product is to the liking of children and even adults.

Actions:

- It stimulates immunity, has an anti-infectious role, contributes to wound healing.
- A powerful antioxidant, it neutralises free radicals and protects the body's cells against oxidative stress.
- Antitoxic, tonic and detoxifying role on the body.
- It contributes to the natural formation of collagen.
- It increases the resistance of blood vessels.
- It contributes to the formation of red blood cells and increases the absorption of iron.
- It contributes to the proper functioning of the digestive system.

Beneficial in:

Low immunity, infectious diseases, respiratory viruses (colds), hypercholesterolemia, hyper-glycaemia, hypertriglyceridemia, deficient peripheral circulation, fatigue, loss of appetite, asthenia, deficient growth and development, etc.

Active Ingredients /20 ml: Eglantine fruit Extract – 7000 mg, Blackcurrant fruit Extract – 7000 mg, Acerola cherry powder – 320 mg providing Vitamin C – 80 mg.

Administration: from 6 months to 5 years old: 10 ml (2 teaspoons) per day; over 5 years old: 20 ml (4 teaspoons) per day. Shake before using. It can be taken as such or diluted in water or other beverage. Contraindicated for people who are allergic to any of the components of the product! Once opened use within 2 months.

Packaging form: 125 ml flask.



VEGETARIAN
friendly



VEGETARIAN
friendly



VISUAL JUNIOR

Syrup for children



DIARILIUM

Syrup for children

Unique combination of active ingredients with natural taste of blueberries, designed for the health of the eyes, it contributes to the protection of the retina against blue light generated by TV sets, computer monitors, laptops, tablets and smartphones, more and more often used by children as well as by adults.

Actions:

- It supports the health of eyes and ears. • It helps the improvement of visual and hearing precision. • It contributes to the improvement of peripheral circulation, including at the level of the eyes, ears and brain. • It supports the structural and functional integrity of the retina and of the internal ear. • Lutein and zeaxanthin are part of the macular pigment which protects the retina against harmful luminous rays.

Beneficial in:

Sight problems and visual precision, hearing disorders, retinal conditions, frequent and/or prolonged exposure to the screens of TV sets, computers, laptops, tablets, or smartphones.

Active ingredients /20 ml: Concentrated blueberry juice – 350 mg, Extract 25:1 from the aerial parts of the *Euphrasia officinalis* / eyewort – 6500 mg, Extract 25:1 of *Ginkgo biloba* leaves – 6500 mg, Vitamin E – 8 mg, Zinc – 1.50 mg, Lutein – 1 mg, Zeaxanthin – 0.75 mg, Vitamin B2 – 0.70 mg, Vitamin A – 488 mcg.

Administration: from 6 months to 5 years old: 10 ml (two teaspoons) per day; over 5 years old: 20 ml (four teaspoons) per day. Shake before using. It can be taken as such or diluted in water or some other beverage. Contraindicated to persons who are allergic to any of the components of the product! Once opened use within 2 months.

Form of packaging: 125 ml flask

It fights diarrhoea, reduces dehydration and calms the abdominal spasms in children.

Diarilium is a delicious syrup for children, with natural taste of strawberries. It contains standardised extracts from especially selected plants for swiftly combating symptoms of diarrhoea, slowdown of intestinal transit, abdominal spasms and losses of fluids.

Actions:

- It combats diarrhoea and slows down intestinal transit.
- It reduces the discomfort caused by an accelerated digestive transit (frequent and aqueous ejections).
- It swiftly calms the spasms of the gastro-intestinal tract.
- It reduces bloating and flatulence.
- It maintains the health of the intestinal microflora.
- It contributes to maintaining healthy gastric secretions.
- It supports the function of the liver and of the gall bladder.
- It contributes to digestive comfort
- It has an antiseptic effect.

Beneficial in:

Diarrhoea, enterocolitis and enteroviruses, bloating and flatulence, abdominal spasms (colic), dyspeptic problems, gastroesophageal reflux.

Active ingredients/10 ml: Blackthorn / *Prunus spinosa* – Aqueous extract from dried fruit – 1.5 g, Silverweed / *Potentilla anserina* – aqueous extract or the aerial parts – 1,5 g, Anise / *Pimpinella anisum* – aqueous extract of dried food – 1.5 g, Blackberry / *Rubus fruticosus* – aqueous extract of leaves – 1 g, Fennel / *Foeniculum vulgare* – aqueous extract of dried fruit - 1 g, Lemon balm / *Melissa officinalis* – aqueous extract of leaves – 1 g, Rosemary / *Rosmarinus officinalis* – extract of 166,67 mg, Grapefruit / *Citrus paradisi* – extra-dried seeds - 50 mg.

Administration: Children over 3 years old: 15 ml (3 teaspoons), twice – three times a day, until the symptoms disappear. Water will be drunk during the whole period of the day. Shake before using. It can be taken as such or diluted. Contraindicated for the persons who are allergic to any of the components of the product! Once opened use within 2 months.

Form of packaging: 125 ml flask.



VEGETARIAN
friendly



NO
ALLERGENS

VEGETARIAN
friendly

30
tb

DINO VITA-MIN

*Complex of 13 vitamins and 6 minerals
without artificial pigments*

A balanced combination, without artificial flavours and pigments, which ensures the daily necessary amount of vitamins (13 vitamins) and minerals (6 minerals) that are essential for the harmonious development of the children's organism, in the form of chewable Tablets, with natural flavours of orange, vanilla and cherry.

Actions:

- It ensures the daily necessary amount of vitamins and minerals that are essential for the growth of the organism's vitality and resistance.
- It has a hepatoprotective, immunostimulant and antioxidant role.
- It ensures the normal functioning of the nervous system and the growth of mental efficiency. It supports the physiological development of the cardiovascular system.
- It maintains the health of the osteoarticular system and of the teeth.
- It supports the organism during the growth period, moments of unbalanced feeding, faulty absorption, lack of appetite, fatigue, convalescence.

Beneficial in:

Lack of appetite, malabsorption syndrome, rickets, decalcification, anaemia, strengthening of the immune system, infectious diseases, convalescence, asthenia, fatigue, etc.

Active ingredients / Chewable Tablet: Vit. C – 80 mg, Vit. B3 – 16 mg, Vit. E – 12 mg, Vit. B5 – 6 mg, Vit. B2 – 1.4 mg, Vit. B6 – 1.4 mg, Vit. B1 – 1.1 mg, Vit. A – 800 mcg, Folic acid (Vit. B9) – 200 mcg, Vit. K1 – 75 mcg, Biotin (Vit. B7) – 50 mcg, Vit. D3 – 5 mcg, Vit. B12 – 2.5 mcg, Calcium – 120 mg, Magnesium – 56 mg, Iron – 2.8 mg, Zinc – 2 mg, Copper – 0.2 mg, Iodine – 30 mcg.

Administration: Children over 4 years old: one Tablet should be chewed every day, after food.

Form of packaging: Flask with 30 chewable tablets.



O campanie COSMO PHARM®



**National campaign for prevention and control
of viral or bacterial infections!**

NERVOUS SYSTEM



30
cps


NEUROTONIC®

Unique combination of substances that are beneficial for the support of the nervous system. **Phosphatidyl Choline** is the precursor of Choline and an active participant in the synthesis of acetylcholine. **Acetylcholine** is essential in the transmission of nervous impulses, its shortage leading to conditions such as Alzheimer's.

Actions:

- Natural tonic for the nervous and vascular systems. It has an antioxidant and neurotropic effect.
- Ginkgo Biloba improves blood circulation to the brain and limbs, ensuring their efficient oxygenation.
- It decreases platelet aggregation and increases blood flow.
- Neuro-nutrients (lecithin, phosphatidylcholine and L-glutamine) result in the optimization of brain functions in intellectual effort, fatigue, memory, attention and concentration disorders.
- It improves the power of concentration, memory, coordination, reaction time.
- It intervenes in the relief of age-related symptoms and delays the natural aging process.

Beneficial in:

Migraines, insomnia, vertigo (dizziness), hearing disorders (wheezing and cracking), vision or balance disorders, movement disorders (cold hands and feet), cerebral ischemia, etc.

Active ingredients / Capsule: High purity concentrated lecithin – 575 mg, providing Phosphatidyl choline – 200 mg, L-Glutamine – 100 mg, Wheat germ oil – 62.50 mg, Ginkgo Biloba (extract) – 20 mg, Policosanol – 2 mg, providing Octacosanol – 1 mg, Gotu Kola (powder) – 50 mg.

Administration: 1 – 2 Capsule per day, after food.

Packaging form: Flask with 30 capsules.

30
cps


MEMORYMAX®

30
cps


Optimal combination of active ingredients that improve memory, focus, attention and last but not least the emotional state. **Phosphatidyl serine** and **Phosphatidyl choline** are part of the neuronal membrane structure and support the health of the nervous system.

Actions:

- It supports the increase of mental efficiency, attention, ability to learn, to memorise, to focus and to coordinate.
- It helps improve emotional state, reduces fatigue and the effects of stress.
- It stimulates interneuronal connections
- EPA and DHA help to maintain normal vision, as well as normal brain and heart function.
- It contributes to nerve cell regeneration.
- It reduces demyelination (loss of the myelin layer leads to sclerosis).
- It delays cognitive decline due to aging.

Beneficial in:

Intense intellectual effort, memory, attention and concentration deficiencies, chronic fatigue, anxiety, depression, improvement of the brain function in degenerative diseases (Alzheimer's, Parkinson's) senility, etc.

Active ingredients / Capsule: Fish oil 250 mg; of which DHA - 100 mg, EPA - 10 mg, Phosphatidyl choline – 100 mg, L-Carnosine – 50 mg, Phosphatidyl serine – 25 mg, Vitamin B2 – 1.4 mg, Vitamin B6 - 1.4 mg, Vitamin B1 – 1.1 mg, Vitamin B12 – 2.5 mcg.

Administration: 2 Capsules per day, after food.

Packaging form: Box with 30 capsules, flask with 30 capsules.



30
cps
60
cps

GINKGO MAX

Equivalent of **6000 mg**

Ginkgo Biloba helps optimizing the blood circulation to the brain and its better oxygenation.

Actions:

- A natural tonic for the nervous and vascular systems.
- Antioxidant effect with specific action on the nervous system.
- It improves circulation to the brain and limbs and decreases platelet aggregation.
- Increases blood flow and ensures efficient oxygenation of the brain.
- It optimises the brain functions during intellectual effort, fatigue states, temporary memory, attention and concentration disorders.
- It intervenes in the relief of age-related symptoms and delays the natural aging process.

Beneficial in:

Neurodegenerative disorders, migraines, headaches, post-stroke recovery, stress, chronic fatigue, hearing impairment (ringing and cracking in the ears), balance or circulation disorders (cold hands and feet), varicose veins etc.

Active ingredients / Capsule : Extract of Ginkgo biloba – 120 mg equivalent to 6000 mg of powder, with Ginkgo flavon-glycosides – 28.80 mg and total terpenoids – 7.20 mg.

Administration:

1 Capsule daily, during breakfast or lunch.

Packaging form: Flask with 30/60 capsules.

30
cps
60
cps

LECITHIN 1200 mg

Approximately 60% of blood plasma lipids and 40% of red blood cells are composed of lecithin compounds.

Actions:

- Lecithin has an important role in nerve cell nutrition, impulse transfer, stimulation of brain functions.
- It improves memory, concentration and learning ability.
- It supports brain function and nervous system health.
- It maintains a positive state of mind and has an anti-stress effect.
- It protects the liver from fat deposits.
- It helps to decrease cholesterol and triglycerides.
- It regulates blood pressure and heart rate.

Beneficial in:

Attention, memory, concentration disorders, depression, stress, Parkinson's disease, Alzheimer's disease, ischemic heart disease, atherosclerosis, hypercholesterolemia, hepatic steatosis, fibrosis, cirrhosis, viral hepatitis etc.

Active ingredients / capsule:

Soy lecithin / (*Glycine max*)* – 1200 mg, containing Phosphatidylcholine – 600 mg a capsule.

**generated by crops that were not genetically modified or radiated.*

Administration:

1 - 2 Capsules per day, after food.

Packaging form: Flask with 30/60 capsules.



30
tb


CALMO DEPRESIN

A unique combination of natural active ingredients, the product is a natural calming and relaxing nerve tonic, beneficial in irritability, stress, insomnia, anxiety and depression.

Actions:

- It contributes to maintaining mental health, the normal functioning of the nervous system, to reducing fatigue and exhaustion.
- It helps to reduce irritability and induce calm, maintains a natural and good quality sleep, maintains emotional balance, optimism and adaptation to stress.
- It contributes to relaxation, reduces digestive discomfort and spasms, promotes a good digestion.

Beneficial in:

Anxiety, irritability, depression, insomnia, stress, etc.

Active ingredients / Capsule: Magnesium – 100 mg, L-theanine – 50 mg, Valerian extract – 30 mg, Passion flower extract – 25 mg, St. John's wort extract – 25 mg, Lemon balm extract – 25 mg, Chamomile powder – 25 mg, Vitamin B3 – 20 mg, Sage powder – 10 mg.

Administration:

1 Capsule per day.

Packaging form:

Flask with 30 capsules.

30
cps


LECITHIN 1200 mg

Lecithin is a strong ally of brain, heart and circulatory systems health. It prevents cholesterol and other fats from forming deposits in the blood vessels.

Actions:

- Lecithin plays an important role in nerve cell nutrition and impulse transfer.
- It stimulates brain function.
- It improves memory, concentration and learning ability
- It is an effective adjuvant in treating degenerative brain diseases.
- It maintains a high mental tone, emotional balance and has an anti-stress effect.
- It protects the liver from fat deposits.
- It helps the decreasing of cholesterol and triglycerides.

Beneficial in:

Attention, memory and concentration disorders, depression, stress, ADHD, Parkinson's disease, Alzheimer's disease, ischemic heart disease, atherosclerosis, hypercholesterolemia, hepatic steatosis, fibrosis, cirrhosis, viral hepatitis etc.

Active ingredients / Capsule:

Lecithin – 1200 mg.

Administration:

1 – 2 Tablets per day, after food.

Packaging form:

Flask with 30 capsules.



30
cps



MELATONIN 3 mg

Melatonin is a hormone secreted by the pineal gland, the smallest gland in the human body. Melatonin secretion cycles can become off-balance due to age, dysfunction caused by time zone changes or stress.

Actions:

- It is a natural sleep inducer, it regulates the circadian rhythm.
- It adjusts the sleep-wake rhythm, and the dysfunctions caused by time zone changes.
- It has a hypnotic (induces sleep) and sedative function (reduces anxiety).
- It reduces the time needed to fall asleep.
- It stimulates the secretion of growth hormones by the pituitary gland.
- It reduces stress.

Beneficial in:

Stress, persistent insomnia, cumulative fatigue, asthenia, travel with time zone changes, etc.

Active ingredients / Capsule:

Extended-release melatonin – 3 mg.

Administration:

1 capsule in the evening, 30 minutes before going to bed.

Packaging form:

Flask with 30 capsules.

10
cps

30
cps



MELATONIN 5 mg

Melatonin is a hormone produced in the body by the pineal gland and it plays an important role in setting the biological clock. The main factor that stimulates melatonin production is darkness, and light has the opposite effect.

Actions:

- It is a natural sleep inducer, regulates the circadian rhythm and stabilises the biological rhythm.
- It adjusts the sleep-wake rhythm, improves sleep quality without any side effects.
- It reduces the time needed to fall asleep.
- It stimulates the secretion of growth hormones by the pituitary gland.
- It reduces stress.

Beneficial in:

Persistent, stress-based insomnia, cumulative fatigue, asthenia, travels affected by time zone changes etc.

Active ingredients / Capsule:

Extended release melatonin – 5 mg.

Administration:

1 capsule in the evening 30 minutes before going to bed.

Packaging form:

Flask with 10/30 capsules.



0
CALORIES

NO
ALLERGENS



0
CALORIES

NO
ALLERGENS



30 cps 60 cps



5 HTP 100 mg

5-Hydroxytryptophan (5-HTP) is an amino-acid produced naturally in the organism, the precursor of the neurotransmitter called serotonin (which is responsible for "the state of happiness") and of the melatonin (a hormone with an important role in adjusting the biological clock).

Actions:

- It maintains the health of the nervous system.
- It increases serotonin and melatonin levels.
- It induces calm, self-confidence and relaxation.
- It restores mental and emotional balance and improves sleep quality.
- It is an adjuvant in diets and regulates appetite.
- It supports memory and stimulates learning ability.

Beneficial in:

Depression, anxiety, stress, emotion, insomnia, irritability, fatigue, exhaustion, certain forms of addiction (alcohol, tobacco), weight loss, etc.

Active ingredients / Capsule: 5-HTP (L-5-hydroxytryptophan in hydroethanolic dried Extract 12:1 from dried seeds of *Griffonia Simplicifolia*, vegetal tablet DR caps™ with delayed release) – 100 mg, Vit. C – 120 mg, Vit. B6 – 20 mg.

Administration:

Adults: 1 – 3 tablets with food.

Packaging form:

Box with 30 capsules, flask with 30/60 capsules.



30 cps 30 cps 60 cps



RHODIOLA

Equivalent of 7500 mg

An adaptogenic tonic plant, also called the "golden root" or "arctic root", which energises and invigorates the body, giving it a state of well-being.

Actions:

- It contributes to increasing the body's ability to adapt to physical stress (fatigue, exhaustion), mental stress (sadness, anxiety), immune and metabolic stress.
 - It stimulates the nervous system function.
 - It maintains normal levels of serotonin, dopamine and energy metabolism.
 - It improves sex life and libido.
 - It helps to maintain sleep duration and quality.
- It delays aging and reduces the aggression of free radicals.

Beneficial in:

Depression, anxiety, apathy, panic attacks, migraines, chronic fatigue, exhaustion, irritability, erectile dysfunction, low libido etc.

Active ingredients / Capsule: *Rhodiola rosea* Extract – 500mg, out of which Rosavin – 15 mg, Salidroside – 5 mg.

Administration:

1 Tablet, one or twice every day at breakfast and/or at lunch.

Packaging form:

Flask with 30/60 capsules.



VEGETARIAN
friendly



VEGETARIAN
friendly

30
cps



30
cps



NeuroMAX®

Unique neuroprotective complex

NEUROMAX® is a neuroprotector and neurotrophic that contains standardised natural extracts with synergistic action for supporting the nervous system: Bacopa monnieri, Ginkgo Biloba, Phosphatidyl Serine, Phosphatidyl Choline, Citicoline, L-Carnitine, Alpha Lipoic Acid, Taurine, L-Glutamine.

NEUROMAX® is a very good natural tonic for the nervous and vascular systems. It contributes to the improvement of brain functions: memory, attention, concentration, coordination of movements and emotional balance, and delays the brain aging processes.

This product is recommended by the SNPCAR – The Romanian Society of Child and Adolescent Neurology and Psychiatry.

Actions:

- It supports the proper functioning of the nervous and vascular systems.
- Mental tonic, it protects the nervous system.
- It improves attention, memory and concentration.
- It significantly increases cognitive performance and coordination.
- It increases alertness and decreases the response time (reaction).
- It supports emotional balance and fights stress, anxiety and depression, without side effects. It reduces fatigue, migraines and insomnia.
- It increases the duration and intensity of intellectual and physical effort.
- It provides the intake of amino acids necessary for brain metabolism.
- It reduces the manifestations caused by cranial nerve damage (blindness, hearing loss, migraines, neuralgia).
- It supports mental function in the elderly, and helps the memory processes.
- It supports post-stroke neuromotor recovery.
- It supports the decreasing of cholesterol and triglycerides and prevents them from depositing on the walls of blood vessels.
- It regulates blood pressure and heart rate.

Beneficial in:

Periods of intense intellectual effort, cognitive, attention and concentration deficiencies, depression, anxiety, dementia, fatigue, mental and physical exhaustion, headache, dizziness (vertigo), hearing impairment, wheezing and ringing in the ears (tinnitus), vision, balance or circulation disorders ('cold hands and feet'), mild and moderate retardation, speech difficulties, memory loss, epilepsy, neurodegenerative diseases – Alzheimer's, Parkinson's, Tourette's, head trauma, post-stroke recovery.

Active ingredients / Vegetal Capsule: vegetală (800 mg): L-carnitine (acetyl hydrochloride L-carnitine) 125 mg, Taurine 125 mg, Citicoline (CDP-choline) 75 mg, Bacopa monnieri (20: 1 hydroethanolic extract from the aerial parts of Bacopa monnieri, with min. 20% bacopazide) 50 mg, Ginkgo biloba (50: 1 hydroethanolic extract from GBE Ginkgo biloba leaves with 24% ginkgo flavone and 6% lactone terpenes) 50 mg, Phosphatidylcholine (hydroethanolic extract from Soybean seeds Glycine max, with min. 25% Phosphatidylcholine) 30 mg, Phosphatidylserine (hydroethanolic extract from Glycine Soybean seeds max with at least 50% Phosphatidylserine) 25 mg, L-glutamine 25 mg, Alpha Lipoic acid 12.5 mg, Pantothenic acid – Vitamin B5 – (50% VNR) 3 mg (Nutritional Reference Value according to Regulation 1169/2011).

Administration: Adults: 1 capsule per day, with food, with a glass of water.

Packaging form: Flask with 30 vegetal capsules, box with 30 vegetal capsules.





MAGNEZIUM³⁷⁵ + B6 *premium*

One tablet of Magnesium 375 + B6 PF provides the daily intake of magnesium ions (375 mg per day), indicated during periods of intellectual overwork, nervousness or irritability. It plays an important role in the absorption of calcium in the bones.

Actions:

- It helps the normal functioning of the nervous system, supports mental health, reduces the effects of stress.
- It ensures an optimal energy metabolism and reduces exhaustion or chronic fatigue.
- Magnesium contributes to the electrolyte balance, the normal functioning of the muscular system, maintaining the health of the teeth and bone system, the cell division process.
- It helps to regulate heart rate and maintain a healthy cardiovascular system.
- Vitamin B6 helps to regulate hormonal activity and the normal formation of red blood cells.
- It reduces nocturnal muscle spasms, cramps, hand numbness.

Beneficial in:

Chronic fatigue syndrome, nervousness, irritability, asthenia, stress, anxiety, concentration disorders, insomnia, cramps, depression, neurosis etc.

Active ingredients / Tablet:

Magnesium – 375 mg, Vitamin B6 – 5 mg.

Administration: 1 Tablet per day, after food.

Packaging form: Flask with 30 tablets.

- **Maintains healthy bones.**
- **Fights depression & anxiety.**
- **Lowers blood pressure.**
- **It has anti-inflammatory benefits.**



NEUROMAX[®]



www.snpcar.ro

MOST COMPLEX, COMPLETE, CONCENTRATED AND BALANCED FORMULA, with maximum concentration of the highest documented standardized plant extracts with neuroprotective action:

Citicoline, L-Carnitine, Taurine, Bacopa monnieri, Ginkgo Biloba, Phosphatidyl Serine, Phosphatidyl Choline, L-Glutamine, Alpha Lipoic Acid.

This product is recommended by the SNPCAR – The Romanian Society of Child and Adolescent Neurology and Psychiatry.

Exceptional efficiency for the proper functioning of the nervous systems and cerebrovascular system, improving:

- Attention, concentration, memory
- Neural structure and increasing the amount of neurotransmitters
- Neuroprotective activity
- Information processing speed
- Executive functions
- Emotional balance
- Slowing the process of brain aging
- Visual-spatial processing
- Coordination movements
- Neurodegenerative diseases such as Alzheimer's, Dementia and Parkinson's diseases
- Post stroke recovery



Neuromax[®] is recommended in:

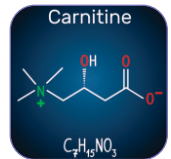
cognitive impairment | memory loss | attention and concentration deficit | speech difficulties | epilepsy | Alzheimer | Parkinson | Tourette | brain trauma | post-stroke recovery | depression | anxiety | mental and physical exhaustion | headache, dizziness (vertigo) | hearing disorders | buzzing and crackling in the ears (tinnitus).

Citicoline, L-Carnitine, Taurine, Bacopa monnieri, Ginkgo Biloba, Phosphatidyl Serine, Phosphatidyl Choline, L- Glutamine, Alpha Lipoic Acid.



Citicoline - nutrient that is found naturally in the human cells with an essential role in nervous activity and brain functions provides antioxidant protection from neuronal damage caused by free radicals and aging, provides the phospholipids necessary for the proper functioning of neurons, increases the rate of mental processing, stimulates memory, attention and the ability to concentrate.

L-Carnitine, amino acid with a neuroprotective role (inflammations, damaged synapses) and antioxidants, fights free radicals, provides energy and thus helps increase the duration and intensity of intellectual and physical effort.



Bacopa monnieri has anxiolytic and antidepressant actions by regulating unbalanced levels of biogenic amines, increases the ability to learn and memorize, stimulates intelligence and accelerates the processing of visual-spacing information.

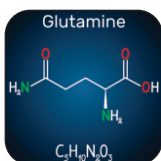
Ginkgo Biloba is used for its miraculous antioxidant effects (due to flavonoids and terpenoids), in increasing peripheral circulation and combating memory loss.



Taurine is an amino acid with a neuromodulator and neuroprotective role. The antioxidant role of taurine protects neurons from the toxic effect of glutamate, induces relaxation, and protects the retina and peripheral nerves.

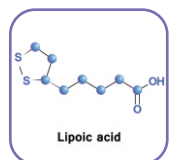
Phosphatidyl choline is a major component of gray matter, important in nerve cell structure and regeneration (neurogenesis). A precursor of choline, it participates in the synthesis of acetylcholine and it represents the essential substance used for nerve transmission and the functioning of the central and vegetative nervous system.

Phosphatidyl serine, the basic component of the inner layer of the nerve cell membrane with the highest concentration in the human brain, has a role in excitability and interneuronal communication, relieves cognitive decline, and regulates the release of acetylcholine, dopamine and norepinephrine. It increases cognitive performance and has an anxiolytic and antistress role (increases dopamine levels).



L- Glutamine, "the brain fuel", is the most abundant amino acid in the body, present in every cell of the human body, found preponderantly in the cerebrospinal fluid, blood and muscles. It has an anti-inflammatory role, stimulates gluten synthesis, and decreases excess brain ammonia that causes neurodegenerative diseases (Alzheimer's disease, Parkinson's and other related conditions).

Alpha lipoic acid acid is the ideal endogenous antioxidant with a neuroprotective role, beneficial for the central and peripheral nervous system, both intra and extracellular, which crosses the blood-brain barrier.



CARDIOVASCULAR SYSTEM



30
cps

COENZYME Q10 200 mg

Coenzyme Q10 is an essential component in the production of vital energy in the brain, heart, muscles and liver (large energy consuming organs). The production of Coenzyme Q10 decreases with age.

Actions:

- It is particularly important in the proper functioning of the heart and cardiovascular system.
- It helps to maintain normal blood pressure, cholesterol and blood sugar levels.
- Strong antioxidant, acts against the effects of free radicals throughout the body and delays the natural aging processes.
- It increases the body's energy resources and maintains an overall positive state of mind.
- It reduces fatigue and exhaustion.
- It reduces the risk of periodontitis and gum disease

Beneficial in:

Heart failure, angina pectoris, arrhythmias, hypertension, mitral valve prolapse, hypercholesterolemia, neurodegenerative diseases (Parkinson's, Alzheimer's), diabetes, liver disease (hepatitis, cirrhosis, steatosis), wrinkles, periodontitis, gum inflammation etc.

Active ingredients / Capsule:

Coenzyme Q10 – 200 mg.

Administration:

1 capsule per day, with food.

Packaging form: Flask with 30 capsules.

30
cps

Q₁₀ + L-CARNITINE α LIPOIC Acid

Coenzyme Q10, L-Carnitine and Alpha Lipoic Acid are essential elements of cellular energy metabolism.

Actions:

- It provides the energy needed for large consuming cells (in the brain, heart, liver and muscles).
- It transforms carbohydrates into energy, lowers blood sugar, regulates blood pressure.
- The Coenzyme Q10, an energiser and antioxidant, tones the heart, stimulates the immune system, lowers cholesterol.
- It supports detoxification of the body, eliminates excess metal ions. Vit. C and E help protect cells against oxidative stress.
- It increases energy and vitality for a stronger, healthier, younger body.

It delays the natural processes of aging

- L-Carnitine burns the fats, turning them into energy, decreases body weight and reduces muscle soreness.

Beneficial in:

Cardiovascular diseases (hypertension, atherosclerosis, angina pectoris, heart failure), liver diseases (hepatic steatosis, hepatitis, cirrhosis, intoxications), diabetes and its complications.

Active ingredients / Capsule: L-Carnitine (fumarate) – 50 mg, Acid alfa Lipoic – 25 mg, Vitamin C – 15 mg, Vitamin E – 15 mg, Coenzyme Q10 – 10 mg.

Administration:

1– 3 capsules per day after food.

Packaging form:

Flask with 30 capsules.

30
cps10
cps30
cps

ACTIVE Q₁₀ MEGA 100mg Ubiquinol

Active Q10™ Mega Ubiquinol® is a superior form of Coenzyme Q 10, identical to that produced by the human body (over 90% of coenzyme Q10 in the body is Ubiquinol®) and the only one in active water-soluble form for immediate absorption into the body. Active Q10™ Mega Ubiquinol® is obtained from culture yeast through a unique process - Kaneka™ QH™ (Japan), and its superior bio-availability results from a patented suspension process, called Bio Solv™, patent no. 6,740,338 exclusive Tishcon Corp.

The concentration of coenzyme Q10 in the body decreases with age. Thus, after the age of thirty, it lowers and an additional contribution is needed for the optimal functioning of the human body. Coenzyme Q10 can be assimilated from various foods such as beef, mackerel, sardines, spinach, cauliflower or from high quality food supplements.

Actions:

- Active Q₁₀™ Mega has a superior bio-availability, a triple plasmatic concentration and double antioxidant protection as related to the other forms of the Coenzyme Q10.
- Ubiquinol - Coenzyme Q10 is an essential component in the production of vital energy in the brain, heart, muscles and liver (large energy consuming organs).
- It has a role in the proper functioning of the heart and cardiovascular system.
- It helps maintain normal blood pressure, cholesterol and blood sugar levels.
- It reduces fatigue, increases immunity and overall tonus.
- A strong antioxidant, it acts against the effects of free radicals throughout the body and delays the natural aging processes.

- It contributes to the restoration of coenzyme Q10 reserves in the kidneys, heart and brain, which are diminished by cholesterol-lowering treatments.
- It prevents the occurrence of periodontitis and gum disease.

Beneficial in:

Heart failure, angina pectoris, arrhythmias, mitral valve prolapse, hypercholesterolemia, neurodegenerative diseases (Parkinson's, Alzheimer's), diabetes, liver disease (hepatitis, cirrhosis), periodontitis, gum disease, wrinkles etc.

Active ingredients / Capsule:

Ubiquinol® Coenzyme Q (QHTM) water soluble 100 mg.

Administration: 1 – 2 capsules per day, before breakfast, with a glass of water.

Packaging form:

Box with 30 capsules, flask with 10/30 capsules.

Up to
7 times greater
absorption

3 time
increased plasma
concentration

Double
antioxidant
protection



30
cps

α LIPOIC Acid +BIOTIN+ CROM

The Alpha Lipoic Acid is also called a "universal antioxidant" because it activates in all body tissues. It acts intracellularly, in cellular mitochondria, where it transforms carbohydrates into energy. Alpha Lipoic acid protects the brain, reduces the risk of cardiovascular disease, fights diabetes, helps to maintain optimal weight, and relieves pain.

Actions:

- It stimulates neuronal regeneration and prevents brain cells from damaging.
- It restores the sensitivity of the affected nerves.
- It supports the elasticity of the vascular walls and the proper functioning of the circulatory system.
- It is a cardiovascular and cerebrovascular protector, it reduces demyelination.
- It reduces LDL "bad" cholesterol level.
- It contributes to the catabolism of nutrients and the release of energy.
- Chrome helps to maintain normal blood glucose levels and normal liver function.
- It helps to remove heavy metals such as iron, mercury and copper.
- Biotin acts in the process of detoxification at intracellular level and contributes to hair, nails and skin health.

Beneficial in:

Diabetes (prophylaxis of complications: retinopathy, cataract, glaucoma, polyneuropathy), cardiovascular diseases (hypertension, angina pectoris, heart failure), liver diseases (hepatitis, cirrhosis, hepatic steatosis), eye diseases, dermatological diseases (acne, dermatitis), intoxications etc.

Active ingredients / Capsule: Alpha Lipoic acid – 300 mg, Biotin 300 mcg, Chrome – 200 mcg.

Administration: 1 Capsule per day, after food.

Packaging form: Flask with 30 capsules.

NO
ALLERGENS30
cps

RESVERATROL 100 mg

Antioxidants are essential in supporting the body's defence system against free radicals. Resveratrol has an antioxidant action 20 times higher than vitamin C and 50 times higher than vitamin E. **Resveratrol Premium 100 mg (98% trans-resveratrol)** is a powerful antioxidant obtained from the plant *Polygonum Cuspidatum* originating from Japan, a vegetal source with a high content of resveratrol.

Actions:

- It provides cardiovascular and brain protection.
- It supports the integrity and normal function of the myocardium and valves.
- It helps to reduce platelet aggregation and maintains proper functioning of the peripheral circulation.
- It maintains normal cholesterol and blood pressure levels.
- It regulates lipid metabolism in the liver and it destroys excess adipose tissue.
- Strong antioxidant, it acts against the effects of free radicals throughout the body, delays the natural aging processes (anti-aging effect) and it supports longevity.
- It is associated in chemo and radiotherapy.

Beneficial in:

Cardiovascular diseases (hypertension, angina pectoris), hypercholesterolemia, hypertriglyceridemia, liver diseases (hepatic steatosis, hepatitis, cirrhosis, intoxications), deficient peripheral circulation, chemo and radiotherapy etc.

Active ingredients / Capsule: Standardised resveratrol 98% trans-resveratrol – 100 mg.

Administration: 1 Capsule per day, before food.

Packaging form: Flask with 30 capsules.



30
cps30
cps

RESVERATROL **resVida**® 100 mg

ResVida® Resveratrol is the purest form of trans-resveratrol, with a purity of over 98%, an unmatched standard of any other form of resveratrol. It has a powerful antioxidant effect, being 4 times greater than beta-carotene and 20 times higher than vitamin C.

ResVida® Resveratrol, from DSM and manufactured in Tishcon's NSF® GMP Registered facility is the ONLY Resveratrol tested for safety: "Safety of resveratrol with examples for high purity, trans-resveratrol, resVida®"(Edwards JA, Beck M, Riegger C, Bausch J., 2011). ResVida® Resveratrol is bioavailable in humans - a key to being able to benefit from this powerful micronutrient

ResVida® Resveratrol has superior bioavailability, being quickly absorbed into the body.

ResVida® Resveratrol has, in addition to the well-known anti-aging effects (invigorated and bright-looking complexion, diminished wrinkles), a role in slowing down the cellular damage caused by oxidative stress, the main cause of premature aging of the body.

ResVida™ Resveratrol 100 mg (98% trans-resveratrol) is a patented product, obtained from the skin of red grapes, with the highest degree of purity of trans-resveratrol, unmatched by any other form of resveratrol. Research on the product has confirmed the benefits and the high absorption in the body.

Actions:

- ResVida® supports the health of the cardiovascular system and nervous system.
- Supports the integrity and normal function of the myocardium and valves.
- It helps to reduce platelet aggregation (clotting) in the blood and maintains the health of the peripheral circulation.
- Maintains blood pressure and high cholesterol levels under control.
- It regulates lipid metabolism in the liver and destroys the accumulation of excessive adipose tissue.
- Powerful antioxidant, it acts against the effects of free radicals throughout the body, delays the natural processes of aging (anti-aging effect) and supports longevity.
- ResVida™ Resveratrol can be taken along with chemotherapy and radiation therapy.

Beneficial in:

Cardiovascular diseases (hypertension, angina pectoris), liver diseases (hepatic steatosis, hepatitis, cirrhosis, intoxications), hypercholesterolemia, hypertriglyceridemia, Peripheral artery disease (PAD), antitumor therapies, etc.

Active ingredients / Capsule: resVIDA® Resveratrol – 100 mg.

Administration: 1 Capsule per day, before meal.

Forma de ambalare: Box with 30 capsules, flask with 30 capsules.



POWERFUL
NATURAL
ANTIOXIDANT

- anti-aging effect
- detoxifies the body

30
cps

NATTOKINAZE SERRAPEPTAZE

Nattokinase and Serrapeptase are proteolytic enzymes, the first being obtained from traditional Japanese food (Natto), soy beans fermented with *Bacillus subtilis natto*, and the second one through controlled fermentation of non-pathogenic strains of *Serratia* spp bacteria.

Nattokinase contributes to the growth of the body's natural capacity to fight against the formation of blood clots, by dissolving fibrin through stimulation of the natural production of plasmin and other anticoagulant agents in the organism. Due to its properties of stimulating endogen production of plasmin, Nattokinase helps reducing the fibroma (made up of fibrin) and blood clots.

Serrapeptase also contributes to decreasing the risk of blood clots being formed at the cardiovascular, cerebral, renal, hepatic level, due to the anti-thrombotic properties.

Serrapeptase, also known for its anti-inflammatory effects and those of reducing pain, acts synergistically with Nattokinase for an enhanced efficiency in protecting the circulatory system, reducing the inflammations and preserving a normal blood pressure.

Actions:

- It contributes to maintaining the cardiovascular system health.
- It protects blood vessels.
- It prevents formation of blood clots and improves blood circulation.
- It maintains a normal level of cholesterol and arterial pressure.
- It promotes the elimination of mucus, at the level of pulmonary airways and sinuses.
- It drains the fluids accumulated around wounds and it helps the removal of scars, bruises and swellings.
- It contributes to the strengthening of the action specific to antibiotics.

Beneficial in:

Hypertension, thrombophlebitis, thrombosis, thrombotic history, uterine fibroma, ovarian cysts, sinusitis, migraines, postoperative trauma etc.

Active ingredients / Capsule: Nattokinase – 150 mg (supplying 3000UF), Serrapeptase – 30 mg (supplying 3000 US).

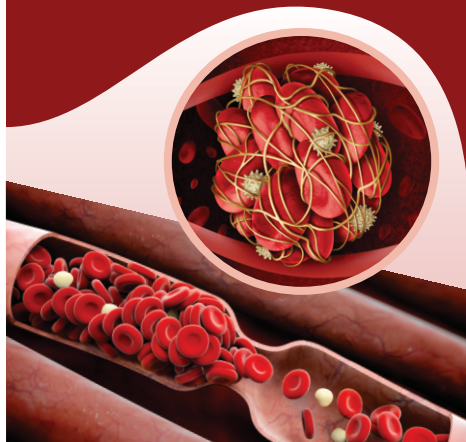
Administration: 1 Capsule every day, on an empty stomach or according to the recommendation of the specialist.

Packaging form: Flask with 30 capsules.



VEGETARIAN
friendly

ANTITHROMBOTIC and NATURAL ANTI-INFLAMMATORY





VENOTONIC Complex

The most complex natural supplement from plant extracts, in optimal concentrations, efficient for the normal functioning of the venous and lymphatic circulation.

Actions:

- It contributes to the normal functioning of the venous and lymphatic circulation. It increases the tonicity of venous walls and venous valves.
- It protects and stimulates microcirculation and inhibits inflammatory reactions.
- It contributes to lymphatic drainage.
- It supports peripheral circulation, helps eliminate the feeling of "heavy legs".
- It helps protect cells against oxidative stress.

Beneficial in:

Venous lymphatic diseases, varicose veins, haemorrhoids, varicose ulcers, blood vessel disorders, circulatory disorders, capillary fragility, cold hands and feet, heavy legs, adjuvant in stroke, endogenous or retinal vascular purpura, haemorrhage, digestive, haemoptysis, bleeding gums, thrombosis, bruising, allergic conditions, infectious diseases with capillary damage.

Active ingredients / Tablet: Micronised diosmin – 200 mg, Vitamin C – 150 mg, Wild chestnut extract – 100 mg, Citrus bioflavonoid – 50 mg, Tocopherol mixture – 77 mg, of which natural Vitamin E – 35 mg; Thistle extract – 75 mg, Hesperidin – 50.4 mg, Quercetin – 26 mg, Rutin – 24.75 mg, Hot pepper extract – 10 mg.

Administration: 1 Tablet per day, with food.

Packaging form: Flask with 30/60 Tablets.



GARLIC *without odour* Equivalent of 1000 mg

Garlic contains more than 200 bioactive ingredients which offer therapeutic benefits, the most important of them being allicin.

Actions:

- It ensures the good functioning of the cardiovascular system.
- It maintains blood pressure, cholesterol and triglycerides within normal values.
- It improves the tonus and it preserves the integrity of the vascular walls.
- It prevents the formation of blood clots and determines peripheral vasodilation.
- It reduces the effects of oxidative stress and it helps to protect the organism against free radicals.
- Together with monoglycerides, it helps to increase the body's self-defence capacity.
- It is a hepatic detoxifier and it reduces fat accumulation.

Beneficial in:

Cardiovascular diseases, atherosclerosis, thrombosis, hypertension, hypercholesterolemia, hypertriglyceridemia, diabetes, inflammations, colds, flu, bacterial and viral infections, gastrointestinal disorders, candidiasis, intestinal parasitoses etc.

Active ingredients / Capsule:

100: 1 super concentrated extract of deodorised garlic bulbs (*Allium sativum*) - 10 mg, equivalent to 1000 mg fresh bulbs.

Administration: 1 – 2 capsules per day, in the morning, before food.

Packaging form:

Flask with 30/60 capsules.



ANTI- CHOLESTEROL



30
cps

KRILL OIL 500 mg

Krill Oil is obtained through exclusive **FLEXITECH™** technology: it is **ultra-concentrated**, **ultra-filtered**, **deodorised** and **vanilla-flavoured**. The process of obtaining Krill Oil by **AkerBioMarine** is maintained to the highest standards. Krill oil (polar shrimp) is superior to fish oil due to the high concentration of unsaturated essential fatty acids (the new generation of Omega 3) and phospholipids. Astaxanthin (a marine bio flavonoid) is a very powerful antioxidant that crosses the blood-brain barrier.

Actions:

- It regulates lipid metabolism. It is water soluble, easy to assimilate and metabolise.
- It protects the cardiovascular system and controls blood pressure.
- It cleans fat deposits on blood vessels, increases their elasticity and blood flow.
- It reduces the level of LDL cholesterol ("bad" cholesterol) and triglycerides.
- It protects the nervous system from degenerative attacks and the body from premature aging.
- It improves attention, concentration, memory,

reduces the risk of depressions.

- DHA helps maintain normal vision and normal brain function. EPA and DHA contribute to normal heart function.
- Strong antioxidant, it neutralises free radicals and protects healthy cells.
- It eliminates discomfort, joint and muscle pain. It supports mobility.
- It increases physical performances.

Beneficial in:

Cardiovascular disorders, hypercholesterolemia, hypertriglyceridemia, arterial hypertension, atherosclerosis, inflammations, attention deficit, memory disorders, myopia, farsightedness, astigmatism, glaucoma etc.

Active ingredients / Capsule:

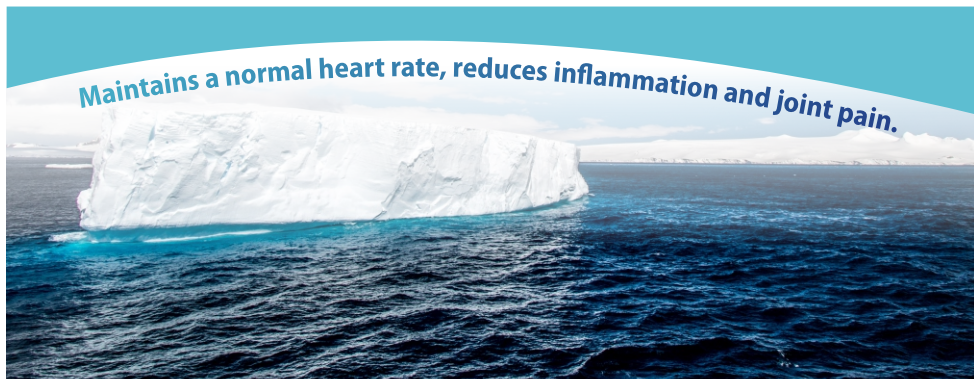
Krill oil (*Euphausia superba*) – 500 mg, of which Phospholipids – 200 mg, Total Omega 3 – 110 mg, of which EPA (Eicosapentaenoic Acid) – 60 mg, DHA (Docosahexaenoic Acid) – 27.50 mg, esterified Astaxanthin – 50 mcg.

Administration: 1 Capsule per day, after food.

Packaging form: Flask with 30 capsules.



Maintains a normal heart rate, reduces inflammation and joint pain.



30
cps

OMEGA 3 *Fish oil*

1005 mg

Omega 3 fatty acids are indispensable to human body, but cannot be produced by it, so it is indicated the intake through diet / quality food supplements, obtained from superior raw materials.

Actions:

- It contributes to the regulation of fat metabolism. It lowers cholesterol and triglycerides levels (increases HDL "good" cholesterol and lowers LDL "bad" cholesterol).
- It protects the cardiovascular system and controls blood pressure.
- It contributes to the elasticity of blood vessels and the proper functioning of blood flow.
- It strengthens the immune system.
- It has an antioxidant and anti-inflammatory effect.
- It improves attention, concentration, memory, and reduces the risk of depression.
- EPA and DHA contribute to normal heart function, normal vision and normal brain function.

Beneficial in:

Hypercholesterolemia, hypertriglyceridemia, cardiovascular disease, hypertension, atherosclerosis, intestinal diseases, diabetes, dermatological conditions (eczema, burns, psoriasis, acne), depression, attention deficit disorder, memory disorders, allergies etc.

Active ingredients / Capsule: fish oil 1000 mg; out of which EPA (Eicosapentaenoic acid) 180 mg and DHA (Docosahexaenoic acid) 120 mg, Vitamin E 5 mg.

Administration: 2 – 3 Capsules per day, with food. It is recommended to drink 1 – 2 litres of liquids per day.

Packaging form: Flask with 30 capsules.

30
cps

OMEGA 3 *Salmon oil*

1000 mg

Recent studies have identified both DHA (Docosahexaenoic acid) and EPA (Eicosapentaenoic acid), Omega 3 fatty acids that are to be found in salmon oil, as being the most beneficial fatty acids for human health.

Actions:

- It has a beneficial role in regulating fat metabolism. It lowers cholesterol and triglycerides levels (increases HDL "good" cholesterol and decreases LDL "bad" cholesterol).
- It protects the cardiovascular system and controls blood pressure.
- It contributes to the elasticity of blood vessels and the proper functioning of blood flow.
- It has an antithrombotic, antioxidant and anti-inflammatory effect.
- It strengthens the immune system.
- It improves attention, concentration, memory, and reduces the risk of depression.
- EPA and DHA contribute to normal heart function, normal vision and normal brain function.

Beneficial in:

Hypercholesterolemia, hypertriglyceridemia, cardiovascular disease, hypertension, atherosclerosis, intestinal diseases, diabetes, dermatological conditions (eczema, burns, psoriasis, acne), depression, attention deficit disorder, memory disorders, allergies etc.

Active ingredients / Capsule: Salmon oil – 1000 mg, out of which EPA (Eicosapentaenoic acid) – 85 mg, DHA (Docosahexaenoic acid) – 75 mg.

Administration: 2 – 4 Capsules per day, with food. It is recommended to drink 1 – 2 litres of liquids per day.

Packaging form: Flask with 30 capsules.



30 cps



30 cps

60 cps

30 cps



OMEGA 3-6-9

Complex 1206 mg

Complex combination that provides a wide range of fatty acids, in optimal concentration for the human body.

Actions:

- It cleans the fat deposits from blood vessels, it increases their elasticity and the blood flow.
- It reduces the level of cholesterol and triglycerides (increases HDL the "good" cholesterol and decreases the LDL the "bad" cholesterol).
- It protects the cardiovascular system and controls the arterial pressure.
- It improves the activity of the nervous system; it preserves the concentration of phospholipids in the membrane of neurons.
- It improves attention, concentration, power of memorization, and reduces the risk of depression.
- EPA and DHA contribute to the normal functioning of the heart, to maintaining normal sight and normal function of the brain.
- It has an antioxidant and anti-inflammatory effect.
- It contributes to the normalization of intestinal transit and to the protection of cells against oxidative stress.

Beneficial in:

Hypercholesterolemia, hypertriglyceridemia, hypertension, atherosclerosis, diabetes, obesity, intestinal diseases, dermatological conditions (eczema, burns, psoriasis, acne) etc.

Active ingredients / Capsule: Borage / *Borago officinalis* seed oil – 440.00 mg, Fish oil – 400.00 mg, Flax / (*Linum usitatissimum*) Seed Oil – 360.00 mg of which: LA / Linoleic Acid – 192.00 mg, ALA / Alpha-Linoleic Acid – 180.00 mg, EPA / Eicosapentaenoic Acid – 120.00 mg, OA / Oleic Acid – 120.00 mg, GLA / Gamma-Linoleic Acid – 83.00 mg, DHA / Docosahexaenoic Acid – 80.00 mg, Vitamin E – 3.36 mg.

Administration:

2 – 3 Capsules per day, with food.

Packaging form: Box with 30 capsules, flask with 30/60 capsules.

HEMP Oil

1000 mg

Cold pressed oil from organically grown and processed husked hemp seeds (*Cannabis sativa*) is a rich natural vegetal source of Omega 3, 6 and 9 polyunsaturated essential fatty acids. Alpha linoleic (Omega 3), linoleic (Omega 6) and oleic (Omega 9) acids are considered "healthy fats" and are vital for the body, but given that it cannot produce them on its own, they must be supplemented with diet or quality nutritional supplements.

Actions:

- It contributes to the normal functioning of the cardiovascular system.
- It reduces the level of "bad" cholesterol (LDL) and triglycerides.
- It supports the immune system and has an anti-inflammatory effect.
- It has an antioxidant effect and contributes to the neutralization of free radicals.
- It regulates the metabolic process of glucose in patients with diabetes.
- It helps relieve skin diseases, (eczema, acne), sunburn.

Beneficial in:

Hypercholesterolemia, hypertriglyceridemia, hypertension, atherosclerosis, diabetes, obesity, inflammatory diseases, dermatological conditions (eczema, burns, psoriasis, acne).

Active ingredients / Capsule: Cold pressed oil from hulled seeds of Hemp (*Cannabis sativa*) grown and processed organically – 1000 mg, of which: alaphinolenic acid (Omega 3) – 130 mg, linoleic acid (Omega 6) – 470 mg and oleic acid (Omega 9) – 50 mg. It does not contain allergens.

Administration:

2 – 3 Capsules per day, after food.

Packaging form: Flask with 30 capsules.





OMEGA 3-6-9

Flax seed oil 1000 mg



A FORMULA obtained by cold pressing, it contains the Omega 3-6-9 complex which is necessary to the human body in an optimal ratio.

Actions:

- It normalises blood pressure levels and protects the cardiovascular system.
- It helps lower "bad" LDL cholesterol and triglycerides.
- It cleans fat deposits from blood vessels and helps burn excess fat.
- It has an antioxidant and anti-inflammatory effect.
- Precious source of fibre, it normalises the intestinal transit.
- It helps to relieve skin diseases such as eczema, acne, sunburn.
- It contributes to the neutralization of free radicals.

Beneficial in:

Hypercholesterolemia, hypertriglyceridemia, hypertension, atherosclerosis, diabetes, obesity, constipation, intestinal diseases, dermatological diseases (eczema, burns, psoriasis, acne) etc.

Active ingredients / Capsules:

Flax (*Linum usitatissimum*) seed oil – 1000 mg, containing: Alpha-Linoleic Acid (Omega 3) – 500 mg, Linoleic Acid (Omega 6) – 150 mg, Oleic Acid (Omega 9) – 120 mg.

Administration: 1 Capsule per day, after food.

Packaging form: Flask with 30/60 capsules.

- *Twice as many unsaturated fatty acids omega 3-6-9.*
- *It maintains the LDL cholesterol and the triglycerides within normal parameters.*
- *It regulates arterial pressure and heart rate.*



AMINO ACIDS





BCAA 500 mg

BCAAs are branched chain amino acids that the human body cannot synthesise, exogenous intake is recommended through a varied diet or quality food supplements. BCAAs represent approximately 70% of the protein mass. They are necessary for those who follow a vegetarian or vegan diet.

Actions:

- They participate in protein and ATP synthesis, and in the energy transport in cells.
- They stimulate the nervous system and mental skills.
- They temper emotions.
- They reduce neurological and mental impairment caused by liver function disorders or by excessive alcohol consumption.
- They are also called "muscle mass builders".
- They increase hormone production and help maintain normal blood sugar levels.
- They contribute to the reduction of body weight and adipose tissue.
- They accelerate the body's recovery from trauma.
- They decrease the intensity of muscle soreness.

Beneficial in:

Increase in the muscle mass of athletes, improvement of sports performances, hepatic diseases, restrictive diets, losing weight regimes, muscle atrophy.

Active ingredients / Tablet: BCAA (branched chain amino acids) – 500 mg, out of which L-Leucine - 250 mg, L-Isoleucine – 125 mg, L-Valine - 125 mg.

Administration: 1 – 2 Tablets per day, after food.

Packaging form: Flask with 30/60 tablets.



L-ARGININE 1000 mg

Arginine is an amino acid that is necessary for the synthesis of proteins in the body, with detoxifying role and liver protector, which helps to remove ammonia.

Actions:

- It increases muscle mass and decreases body fat (anabolic effect).
- It stimulates the production of testosterone, improves erection, spermatogenesis and sexual performances.
- It stimulates immunity, growth hormone and insulin synthesis.
- It ensures the efficient transport of nutrients and oxygen to the muscles.
- It increases muscle strength and tone.
- Nitric oxide precursor, it produces vasodilation, maintains normal blood pressure, increases oxygenation of heart muscle, reduces the risk of blood clots and improves peripheral circulation.
- It stimulates immunity, growth hormone and insulin synthesis.

Beneficial in:

Erectile dysfunction, infertility, improved sports performance, muscle soreness, angina pectoris, hypertension, thrombosis, hepatic steatosis, alcoholic cirrhosis, hepatitis etc.

Active ingredients / Tablet:

L-Arginine – 1000 mg.

Administration: 1 Tablet per day, after food.

Packaging form: Flask with 30/60 tablets.



30
tb

L-CARNITINE

500 mg

L-Carnitine is an amino acid specialised in the metabolism of lipids, it transforms fats and fat tissue deposits into energy. It increases the amount of fat metabolised by the human body by up to 70%. Combined with sustained physical effort, L-Carnitine combats excess weight.

Actions:

- It burns fats by turning them into energy in the muscle cells and myocardium.
- It contributes to weight loss by reducing fat mass.
- It increases physical performance, helps to increase muscle mass and effort endurance and reduces muscle soreness.
- It strengthens and protects the cardiovascular system.
- It reduces the level of "bad" LDL cholesterol and triglycerides.
- It has an antioxidant role, protects the liver and the peripheral nerves.
- It stimulates metabolic and energy processes as well as fertility.

Beneficial in:

Weight loss diets, obesity, hypercholesterolemia, hypertriglyceridemia, liver disease: hepatic steatosis, cirrhosis, sustained physical effort, muscular dystrophy; male infertility etc.

Active ingredients / Tablet: L-Carnitine tartrate 745 mg, providing L-Carnitine (tartrate) – 500 mg.

Administration: 1 – 2 Tablets per day, after food, but 30 minutes before any physical activity.

Packaging form: Flask with 30 tablets.

30
cps

L-CARNITINE

250 mg

L-Carnitine-fumarate is an amino acid found in abundance in the human skeleton and heart muscle. It promotes oxygenation of the heart muscle and supports cardiovascular energy, improves recovery after physical exercise and accelerates metabolism. Fumarate, or fumaric acid, is an important compound, naturally present in the body.

Actions:

- It strengthens and protects the cardiovascular system.
- It protects the liver and peripheral nerves.
- It reduces the level of "bad" LDL cholesterol and lowers triglycerides.
- It increases physical performance, helps to increase muscle mass and effort endurance and reduces muscle soreness.
- It stimulates fertility.
- Strong antioxidant, it acts against the effects of free radicals throughout the body and delays the natural aging processes.

Beneficial in:

Weight loss diets, obesity, hypercholesterolemia, hypertriglyceridemia, sustained physical effort, muscular dystrophy, liver diseases: steatosis, cirrhosis; male infertility etc.

Active ingredients / Capsule:

L-Carnitine (fumarate) – 450 mg, providing L-Carnitine – 250 mg.

Administration:

1 – 2 Capsules per day, after food.

Packaging form: Flask with 30 capsules.



VISUAL



200 FT.
61 M

1

100 FT.
30.5 M

2

70 FT.
21.3 M

3

50 FT.
15.2 M

4

40 FT.
12.2 M

5

30 FT.
9.14 M

6

25 FT.
7.62 M

7

20 FT.
6.10 M

8



VIZUAL *Forte*

Optimal combination of nutrients to improve visual acuity. Lutein, an important ingredient in Visual Forte, is found concentrated in the macula, an area of the retina that plays a role in distinguishing colours and details. Blueberries stimulate the regeneration photoreceptors found in the retina.

Actions:

- It protects the eyes against the harmful effects of oxidative stress.
- It protects against free radicals and radiations: solar, ultraviolet (monitors)
- It improves the ocular blood flow and maintains a healthy eyesight.
- It supports the normal formation of collagen for the normal functioning of blood vessels.
- It reduces the complications caused by diabetes in the eyes.
- It helps maintain the ability to adapt to darkness (especially in case of people needing an optimal night vision: drivers, pilots).

Beneficial in:

Myopia, hypermetropia, astigmatism, glaucoma, cataract, macular degeneration, diabetic retinopathy, retinitis pigmentosa, ocular atherosclerosis, sensitivity of the eyes (tired eyes), photophobia (hypersensitivity to light), etc.

Active ingredients / Tablet: Vitamin C – 100 mg, Vitamin E – 30 IU, extract of Blueberry – 25 mg, Zinc – 7.5 mg, Vitamin A (Beta-carotene) – 2 mg, providing vitamin A – 3334 IU, Lutein – 500 mcg, Copper – 500 mcg.

Administration: 1 – 3 Tablets per day.

Packaging form: Flask with 30 Tablets.



LUTEIN 10mg ZEAXANTHIN 2mg

Lutein and zeaxanthin are natural carotenoids and antioxidants. They are found in high concentration in the eye tissue and have a protective role against the harmful effects of oxidative stress on the eyes, but, at the same time, they keep the heart healthy, reduce the risk of atherosclerosis and have an important role in combating complications that may occur with the onset of diabetes (diabetic retinopathy).

Actions:

- They protect the lens, retina and macula against free radicals and UV rays.
- They improve eye circulation and maintain a healthy vision.
- They efficiently protect the retina, they prevent the occurrence of cataracts and macular degeneration.
- They neutralise free radicals and protect against oxidative stress.
- They contribute to increased visual acuity at night.
- Vitamin C contributes to the normal formation of collagen for the normal functioning of blood vessels.

Beneficial in:

Degenerative diseases of the eyes, protection of the eyes from stressors, namely computer, telephone, television, artificial light etc.

Active ingredients / Capsule: Vitamin C – 80 mg, Mexican marigold extract (*Tagetes erecta*) – 22 mg, of which Lutein – 10 mg; Mexican marigold extract (*Tagetes erecta*) – 11 mg, of which Zeaxanthin 2 mg; extract of Blueberry (*Vaccinium myrtillus*) – 10 mg.

Administration: 1 Capsule daily, with food.

Packaging form: Flask with 30/60 capsule.



OSTEO- ARTICULAR



30
cps

CURCUMIN 95% + PIPERINE

THE STRONGEST ANTIOXIDANT COMPLEX, ANTI-INFLAMMATORY AND ANTI-CANCER AGENT

Curcumin (turmeric or "golden spice") is a plant originating from Asia and Central America. The CURCUMIN C3 Extract contains polyphenols having an anti-inflammatory, antioxidant, antibacterial and anti-fungal role.

PIPERINE 95% stimulates the absorption of curcumin in the body up to 20 times, substantially increasing the effectiveness of curcumin.

Actions:

- It has strong antioxidant, anti-inflammatory and anti-cancer properties.
- Efficient in neutralizing free radicals, which induce the aging and disease process.
- It helps reduce inflammations in the body.
- It contributes to the restoration of affected tissues.
- It acts successfully in preventing and improving osteoarticular diseases.
- It contributes to the stimulation of connective tissue and synovial fluid restoration processes.
- It supports the immune system.
- It has an antimicrobial, antiparasitic and antifungal effect.
- It fights allergies.
- It helps to maintain a healthy skin.
- It maintains a healthy digestion and supports the absorption of nutrients.
- It helps to control body weight.
- It supports and vitalises the functions of the nervous system.
- It delays the degenerative processes.
- It increases the level of serotonin and dopamine, the neurotransmitters responsible for a good mental health.

- It has a neuroprotective action and fights memory deficit.
- It supports heart function.
- It contributes to maintaining the health of the upper respiratory tract.
- It helps to maintain liver health and prevents fat accumulation.

Beneficial in:

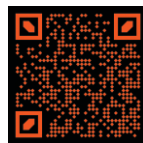
Indicated in heart, metabolic, degenerative, tumour diseases, slowing down the aging and decay processes, enhancing the duration and quality of life, prevention and amelioration of chronic rheumatic diseases, pain and discomfort in the affected joints (joint diseases, articular rheumatism and other arthritic diseases, various digestive (gastrointestinal) diseases, cardiovascular diseases, tumour diseases, including various cancers (breast, prostate, etc.), liver, lung, kidney, skin, Alzheimer's, Parkinson's diseases, other chronic conditions of inflammatory nature, rheumatism, rheumatoid arthritis, osteoarthritis, spondylitis, atherosclerosis, liver disease, gastritis, irritable bowel syndrome, ulcerative recto colitis, allergies.

Active ingredients / Vegetal Capsule (670 mg):

Curcumin C3 Turmeric Complex / *Curcuma longa*, standardised extract 95% curcuminoid – 400 mg; Black pepper / *Piper Nigrum*, standardised extract 95% piperine – 5 mg.

Administration: Adults: 1 Capsule daily, with food.

Packaging form: Box with 30 vegetal capsules.





ARTROFORTE®

ULTRASTRENGTH ARTROFORTE® Cream

Natural complex of standardised extracts for joint health. The anti-inflammatory and analgesic actions of ARTROFORTE®, on all joint areas, are devoid of all side effects specific to synthetic anti-inflammatory drugs.

Actions:

- It contributes to the reduction of inflammatory processes and pain in the osteoarticular system.
- It stimulates the synthesis of glycosaminoglycans, substances that ensure the integrity of the joint, membrane and synovial fluid.
- It helps to maintain synovial fluid viscosity and lubricate joints.
- Beneficial in motor recovery after trauma and surgery, as well as in increased wear (demanding work, obesity).
- It improves joint mobility and strength.

Beneficial in:

Degeneration and joint inflammation: arthritis, rheumatoid arthritis, rheumatism, osteoarthritis, spondylosis, osteoporosis, marked wear and tear (the elderly, challenging physical activities).

Active ingredients / Capsule:

Glucosamine sulphate 2 KCl 250 mg, shark cartilage – 50 mg, mucopolysaccharidoses – 50 mg, bromelain 600 GDU – 50 mg, Sea Cucumber powder (*Holothuroidea sp.*) – 50 mg, 4:1 extract of Cat's Claw bark (*Uncaria tomentosa*) – 100 mg, 4:1 extract of aerial parts of Feverfew (*Tanacetum parthenium*) – 50 mg, 6:1 extract of *Boswellia serrata* resin – 50 mg, 4:1 extract of White Willow bark (*Salix alba*) – 25 mg.

Administration: 1 – 2 Capsules per day, after food.

Packaging form: Box with 30 capsules, flask with 30/60 capsules.

ArthroForte® Cream is a unique American formula with 10 active ingredients that acts quickly and efficiently against osteoarticular, muscular and rheumatic pain.

Actions:

- Strong anti-inflammatory and natural revulsive with local, intense and lasting action.
- It acts by reducing pain, inflammation and joint dysfunction.
- It maintains the viscosity of synovial fluid, lubricates and nourishes joints by improving their mobility and endurance.
- For maximum effect, it is recommended to be combined with ArthroForte® Tablets.

Beneficial in:

Degeneration and joint inflammation: arthritis, rheumatoid arthritis, rheumatism, osteoarthritis, spondylosis, bruising, sprains, trauma, back pain, damaged joints, etc.

Active ingredients:

Menthol 2%, *Aloe Barbadensis* leaf gel (Aloe Vera Gel), *Boswellia Serrata* extract, Camphor, Eucalyptus Globulus oil, Glucosamine sulphate, Flax seed oil (*Linum Usitatissimum*), Methyl salicylate, Methylsulfonyl-methane (MSM), Willow bark extract (*Salix Alba*).

Administration: Apply ArthroForte® Cream 2 – 3 times a day, directly on the affected area, no more than four times a day. Do not apply the cream on open wounds or damaged skin.

Packaging form:

Cream 100 ml.



30
cps

ANTIARTRITIC®

Natural complex with anti-inflammatory and analgesic actions devoid of all side effects specific to synthetic anti-inflammatories. Shark cartilage, rich in chondroitin and glucosamine, helps to rebuild cartilage and increases joint mobility.

Actions:

- It contributes to the restoration of affected joint and intervertebral structures.
- It reduces discomfort and supports joint mobility in: joint bruises, decalcifications, marked wear.
- It stimulates the synthesis of glycosaminoglycans, substances that ensure the integrity of the joint, membrane and synovial fluid.
- Due to its anti-inflammatory and analgesic properties, it reduces pain, discomfort and dysfunction in trauma and marked wear.
- Calcium, Vit. C and Vit. D3 help maintain a healthy bone system.

Beneficial in:

Degeneration and joint inflammation (arthritis, osteo-rheumatoid arthritis, rheumatism, polyarthritis, spondylosis, senile osteoporosis), decalcification and hypocalcaemia, situations of marked wear (elderly people, demanding activities), etc.

Active ingredients / Capsule: Glucose sulphate – 250 mg, Calcium – 100 mg, shark cartilage 62.5 mg, hydrolysed gelatine 62.5 mg, Manganese – 6.25 mg, Curcumin – 25 mg, Vitamin C – 20 mg, Vitamin D3 – 1.25 mg.

Administration:

1 – 2 Capsules per day after food.

Packaging form:

Flask with 30 capsules.

30
cps

LIQUID CALCIU

Ca Mg K1 D3

High quality mineral cocktail that successfully combines Ca, Mg, Vitamin K 1 and Vitamin D3. All these act synergistically for an optimal bio absorption and the creation of an efficient nutritional support aimed to maintain the human body health.

Actions:

- It contributes to maintaining the health of the osteoarticular, muscular, cardiovascular systems as well as the cell division process.
- It contributes to the maintenance of mental and nervous systems health.
- It helps to maintain the body's electrolyte balance.
- It helps to prevent loss of bone density.
- It has an important role in blood coagulation process and in cell permeability.
- Efficient in the normal functioning of digestive enzymes, in protein synthesis and elimination of acidic residues.
- It ensures optimal energy metabolism, supports intellectual effort and reduces exhaustion or chronic fatigue.

Beneficial in:

Calcium deficiencies, decalcifications, hypocalcaemia, spasms, rickets, osteoporosis, dental cavities, absorption deficit, electrolyte imbalances, coagulation disorders, immune system support, palpitations, insomnia etc.

Active ingredients / Capsule: Calcium m – 333 mg, Magnesium – 133 mg, Vitamin K 1 – 75 mcg, Vitamin D3 – 200 IU / 5mcg.

Administration:

1 – 2 Capsules per day, after food.

Packaging form:

Flask with 30 capsules.



VEGETAL GLUCOSAMINE 750 mg

Glucosamine is part of the articular cartilage structure and acts as a buffer between the bony ends.

Actions:

- It stimulates the synthesis of glycosaminoglycans, substances that ensure the integrity of articular cartilage, membrane and synovial fluid.
- It is absorbed quickly and penetrates easily into the joint.
- It repairs the structure and composition of the affected cartilage.
- It increases joint mobility and functionality and provides lubrication.
- It reduces discomfort, pain and joint dysfunction
- It may be associated with specific medication without any side effects.

Beneficial in:

Rheumatic diseases such as osteoarthritis, rheumatoid arthritis, gonarthrosis, coxarthrosis, spondylosis; injuries caused by marked wear etc.

Active ingredients / Tablet:

glucosamine sulphate of vegetal origin – 750 mg.

Administration: 1 – 2 Tablets per day. Packaging form: Flask with 30/60 tablets.

Packaging form: Flask with 30/60 tablets.

Precautions: It is not recommended for use in patients with insulin-dependent diabetes.



MSM 1000 mg

MSM (methylsulfonylmethane) is a natural source of biologically active sulphur that helps to reduce pain and inflammation in the joints. It stimulates collagen production and helps to restore joint flexibility.

Actions:

- It improves joint structure, increases joint mobility and functionality.
- It provides lubrication.
- It reduces osteoarticular and muscle discomfort.
- It repairs the structure and composition of the affected cartilage.
- It reduces discomfort and dysfunction in trauma and marked wear.
- It may be associated with specific medication without any side effects.
- It blocks histamine receptors.
- It is a liver detoxifier (sulphur is a component of glutathione).

Beneficial in:

Rheumatoid arthritis, osteoarthritis, cervical spondylitis, fibromyalgia, carpal tunnel syndrome, tendinitis, bursitis, torticollis, Crohn's disease, diverticulosis, allergies, detoxification etc.

Active ingredients / Tablet:

Methylsulfonylmethane (MSM) – 1000 mg.

Administration: 1 – 2 Tablets per day.

Packaging form: Flask with 30/60 tablets.



30
tb

CAL-MAG-ZINC

Calcium is an essential element in the formation and support of the osteoarticular, muscular, cardiovascular and nervous systems. **Magnesium** helps to regulate heart rate and the proper functioning of the nervous system. **Zinc** supports the optimal functioning of the immune system, contributes to the creation of new cells and stimulates collagen production.

Actions:

- It contributes to the formation of strong bones and their maintenance in optimal condition.
- It maintains the body's mineral balance and prevents loss of bone density.
- It has an important role in the blood coagulation process and in cell permeability.
- It is efficient in the normal functioning of digestive enzymes, in the synthesis of proteins and the elimination of acidic residues.
- Calcium, magnesium and zinc help to maintain the health of the bone system and the process of cell division.
- Magnesium helps the normal functioning of the nervous system, supports mental health, reduces fatigue and the effects of stress and fixes calcium in the bones.
- Zinc contributes to the normal functioning of the immune system, to maintaining the health of the skin, hair and nails, and protects cells against oxidative stress.

Beneficial in:

Mineral deficit in bones and tissues, decalcifications, hypocalcaemia, spasms, rickets, osteoporosis, dental cavities, absorption deficit, electrolyte imbalances, coagulation disorders, immune system support, hair loss etc.

Active ingredients / Tablet: Calcium – 333.4 mg, Magnesium – 133,40 mg, Zinc – 5 mg.

Administration: 1 – 3 Tablets per day, after food.

Packaging form: Flask with 30 tablets.

NO
ALLERGENS0
CALORIES30
tb

CALCIUM + Vitamin D3

Of oyster shells

The recommended daily intake of calcium differs depending on age, but also on certain features or changes in the physiological evolution of each person. Vitamin D3 increases the degree of calcium absorption in the body and supports the immune system.

Actions:

- Calcium is essential for bone and teeth health. It intervenes in the process of muscle contraction - relaxation, as well as in the transmission of nerve impulses.
- It contributes to blood coagulation and the proper functioning of the muscular, cardiovascular and nervous systems.
- Vitamin D3 helps to strengthen immunity, increases calcium absorption and its fixing in the bones.
- It supports the harmonious development of the osteoarticular system when the absorption is insufficient or the need is increased (childhood, adolescence, athletes, pregnancy and lactation).
- It helps to compensate for losses after diets, laxatives, diuretics.
- It reduces the effects of allergies.

Beneficial in:

Calcium deficiencies, decalcifications, hypocalcaemia, spasmodophilia, rickets, osteoporosis, dental cavities, absorption deficit, coagulation disorders, immune system support etc.

Active ingredients / Tablet: Calcium from oyster shells – 500 mg, Vitamin D3 – 125 IU.

Administration: Adults: 1 – 3 Tablets per day. Children over 5 years old: 1 Tablet per day.

Packaging form: Flask with 30 tablets.

NO
ALLERGENS0
CALORIES

VEGETAL GLUCOSAMINE

It is absorbed quickly and penetrates the joint easily ensuring lubrication and repair of the affected cartilage structure, it increases the joint mobility and functionality.



ARTROFORTE® + ARTROFORTE cream®

Internal and topical administration. Anti-inflammatory and analgesic effect, it acts quickly and effectively against osteoarticular, muscular and rheumatic pain.



CAL-MAG-ZINC

Essential in the formation and proper functioning of the osteoarticular, muscular, cardiovascular and nervous systems.



CALCIUM + Vitamin D3

Vitamin D3 increases the degree of absorption of calcium in the body and supports the immune system.



MSM

Energy for movement!
It reduces pain and increases joint mobility.



HYALURONIC ACID

It contributes to the restoration of the synovial fluid which is essential in joint mobility.



ANTIARTRITIC®

Rich in chondroitin and glucosamine, it helps rebuild cartilages and increases joint mobility.



Liquid CALCIUM + Ca Mg K2 D3

Essential association for the efficient absorption of calcium without any risk of abnormal deposits.



SISTEM ENDOCRIN





DIABESTOP®

Unique formula of substances with benefits in lowering high blood sugar levels, decreasing the incidence of complications in diabetes, and fighting off excess weight. Gymnema sylvestre, also called the "sugar destroyer" rises the secretion of insulin and restores the "islands of Langerhans" cells. Bitter melon/cucumber, Momordica charantia, also called "plant insulin", is a strong hypoglycemic agent.

Actions:

- Contributes to normal blood sugar levels and pancreatic cell regeneration.
- Improves the exocrine and endocrine secretion function of the pancreas.
- Converts carbohydrates into energy in cellular mitochondria.
- Protects the cardiovascular system.
- Reduces cholesterol and lowers triglycerides.
- Supports the elasticity of the vascular walls and restores the sensitivity of the affected nerves.

- Reduces the craving for sweets and contributes to weight loss.

Beneficial in:

Diabetes and its complications: neurological (neuropathy), vascular (arteritis, atherosclerosis, hypertension, thrombosis, retinopathy), renal (renal failure), obesity, pancreatitis, etc.

Active ingredients / Capsule:

Bitter melon Extract (*Momordica charantia*) – 125 mg, *Gymnema sylvestre* extract– 125 mg, Cinnamon Powder (*Cinnamomum cassia*) – 50 mg, Alpha Lipoic Acid – 62.5 mg, Magnesium – 50 mg, Zinc – 5 mg, Manganese – 1 mg, Chromium – 20 mcg.

Administration: 1 – 2 Capsules per day.

Packaging form: Flask with 30 capsules.

Preaution: It is recommended to monitor blood glucose and adjust the treatment for patients with diabetes.



GASTRO- INTESTINAL



10
dj

COSMENZYMES

7 Digestive enzymes

Complex of 7 natural digestive enzymes (gastric, pancreatic and biliary) that help to eliminate the discomfort caused by a slow or incomplete digestion (nausea, bloating, constipation, abdominal discomfort). Digestive enzymes play a role in the breakdown of food.

Actions:

- It stimulates the complete digestion of food and its transformation into nutrients and energy.
- It regulates the activity of the gallbladder, liver, pancreas and intestines.
- It improves intestinal transit and metabolic processes.
- It destroys bacteria and prevents their absorption.
- Recommended after high feeding.

Beneficial in:

Excessive eating, enzyme deficiency, indigestion, abdominal discomfort, nausea, flatulence and tympanites, constipation, biliary dyskinesia, cholecystectomy, chronic pancreatitis, irritable bowel syndrome etc.

Active ingredients / Coated Tablets: Bovine bile extract – 100mg, Amylase – 30,000 USP units, Protase – 20,000 USP units, Lipase – 6,000 USP units, Pepsin (1: 5,000) – 50 mg, Papain (from papaya) – 50 mg, Bromelain (from pineapple) – 25 mg.

Administration:

1 – 2 Coated tablets per day, after food.

Packaging form: Flask with 10 coated tablets.

30
tb

FIBRES

Fibres are a carbohydrate derived exclusively from plant-based food. Soluble or insoluble, fibres are necessary for the optimal functioning of the digestive tract and as a result, vital for the health of the whole body. It contains all 4 types of fibres: cellulose, hemicellulose, pectin and lignin.

Actions:

- Also called "the little digestive broom", food fibres help speed up intestinal transit.
- They have a laxative, detoxifying, anti-haemorrhoidal effect.
- They balance intestinal flora by eliminating harmful bacteria, parasites and possible residues.
- They contribute to the normalization of blood sugar and cholesterol.
- They do not cause bloating or cramps.
- They contribute to weight loss.
- They eliminate excess water and increase the feeling of satiety.

Beneficial in:

Constipation, bloating, detoxification, weight loss, food intolerances, indigestion, haemorrhoids etc.

Active ingredients / Tablets: Fibres (oat fibre concentrate) – 750 mg.

Administration:

1 – 4 Tablets per day, before food. Drink daily 1 – 2 litres of water.

Packaging form:

Flask with 30 tablets.



10
tb
30
tb

HERBOLAX®

Natural laxative

It is obtained from a unique mixture of fruit and vegetable powders, which help the proper functioning of the intestinal transit and the fight against occasional constipation, which cannot be treated by a mere proper diet.

Actions:

- It stimulates intestinal motility.
- It eliminates the contents of the digestive tract.
- It is useful in temporary transit obstructions.
- It detoxifies and removes toxins.

Beneficial in:

Constipation, temporary transit obstruction, haemorrhoids, anal fissures, pre- and postoperative conditions etc.

Active ingredients / Tablets:

Senna leaf (*Senna Alexandrina*) powder – 325 mg, Senna (*Cassia Angustifolia*) leaf extract – 65 mg, *Cassia fistula* (fruit extract) – 25 mg, Tamarind (*Tamarindus Indica* fruit powder) – 25 mg.

Administration:

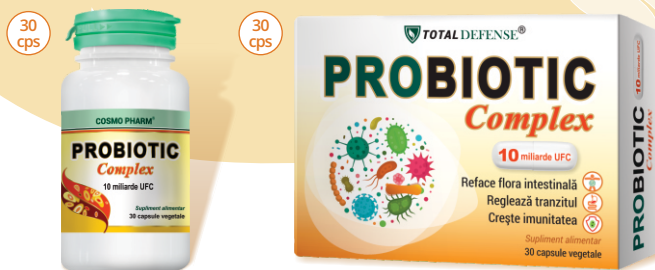
Adults: 1 – 2 Tablets in the evening before going to bed, occasionally, for no more than 7 days in a row. Drink 1 – 2 litres of liquids per day.

Packaging form: Flask with 10/30 tablets.



Fights constipation quickly, efficiently and naturally.





PROBIOTIC 10 billions UFC Complex



It restores intestinal flora



It regulates transit



It increases immunity

The balance of the intestinal flora is essential for maintaining human body health.

Actions:

- It contributes to the recovery of the intestinal flora affected by inadequate nutrition and antibiotic treatment.
- It supports a healthy immune system.
- It protects the body against frequent and recurrent infections.
- It regulates intestinal transit.
- It reduces allergic reactions.
- It helps to prevent intestinal tract infections.
- It reduces unpleasant manifestations (bloating, heartburn, abdominal discomfort).
- It helps to remove halitosis.
- It helps in urogenital infections and those caused by H. Pylori.

Beneficial in:

Diarrhoea / constipation, irritable bowel syndrome, flatulence, food intolerances, increases body immunity, antibiotic treatment, enterocolitis etc.

Active ingredients / Vegetal Capsule: *Lactobacillus acidophilus* 1 x 10¹¹ CFU/g – 82,50 mg, *Lactobacillus casei* 1 x 10¹¹ CFU/g – 20 mg, *Lactobacillus salivarius* 1x10¹¹ CFU/g – 10 mg, *Lactobacillus plantarum* 1x10¹¹ CFU/g – 10 mg, *Bifidobacterium lactis* 1x10¹¹ CFU/g – 9 mg.

Administration:

Children: 1 Capsule per day, before food (capsules content may be mixed with milk, tea or water). **Adults:** 1 capsule per day, before food. It can be associated with antibiotics, two hours before or after the first dose.

Packaging form:

Flask with 30 capsules / box with 30 vegetal capsules.



10
cps

MEGA BIOTIC®

20 BILLION friends in a Capsule

15 strains of beneficial lactic acid bacteria + ZINC

The most effective probiotic complex, with the most strains, at an unbeatable price. It restores the optimal level of beneficial bacteria in the body, helping it to function normally by reducing harmful bacteria, strengthening the immune function and stimulating digestion. It has a double effect: it regulates the intestinal transit, both in case of diarrhoea and in case of constipation. It contains 15 lactic strains beneficial for both the large intestine (Bifidobacterium) and the small intestine (Lactobacillus), plus Zinc (fights infections and strengthens immunity). The 26 billion colony-forming units (CFUs), at the time of production, guarantee the presence of at least 20 billion benign bacteria that live throughout the life of the product.

Actions:

- It is associated to the antibiotic treatment.
- It restores the balance of the intestinal flora.
- It reduces the risk of digestive problems caused by the imbalance of the intestinal flora (food intolerance, bloating, indigestions, heartburn, irritable bowel syndrome).
- Efficient in the treatment of diarrhoea and constipation.
- MegaBiotic® produces the enzyme lactase (beta-galactosidase) which helps to assimilate lactose, so it is beneficial in case of lactose intolerance, as well as for gluten.
- It stimulates and strengthens the immune system.
- It has anti-infective, antiviral, antifungal, antiparasitic effect.
- It reduces unpleasant manifestations caused by vaginal, urinary, skin and lung infections.
- It favours the synthesis of B vitamins and vitamin K.
- It eliminates bad breath – halitosis.

Beneficial in:

The restoration of protective intestinal flora, regulation of intestinal transit (both in diarrhoea and in constipation), bloating, irritable bowel syndrome, food intolerances (lactose, gluten), indigestions, deficient immune system and adjuvant during convalescence periods. It has to be associated with antibiotics. It eliminates halitosis.

15 strains of beneficial lactic acid bacteria, with a minimum addition of 20 billion CFUs (at the moment of the production, a minimum of 26 billion CFUs – colony forming units):

Lactobacillus rhamnosus Lr-G14 ≥ 3,0 mld UFC/caps	Bifidobacterium breve BB-G95 ≥ 1,0 mld UFC/caps	Lactobacillus paracasei LP-G110 ≥ 1,0 mld UFC/caps
Bifidobacterium lactis BL-G101 ≥ 2,0 mld UFC/caps	Bifidobacterium bifidum BB-G90 ≥ 1,0 mld UFC/caps	Lactobacillus helveticus LH-G51 ≥ 1,0 mld UFC/caps
Lactobacillus acidophilus LA-G80 ≥ 2,0 mld UFC/caps	Bifidobacterium longum BL-G301 ≥ 1,0 mld UFC/caps	Lactobacillus gasseri LG-G12 ≥ 1,0 mld UFC/caps
Lactobacillus plantarum Lp-G18 ≥ 2,0 mld UFC/caps	Bifidobacterium infantis BL-G201 ≥ 1,0 mld UFC/caps	Lactobacillus bulgaricus LB-G40 ≥ 0,5 mld UFC/caps
Lactobacillus reuteri LR-G100 ≥ 2,0 mld UFC/caps	Lactobacillus casei LC-G11 ≥ 1,0 mld UFC/caps	Lactobacillus salivarius LS-G60 ≥ 0,5 mld UFC/caps

– Zinc gluconate – 75 mg, providing 10 mg Zinc/100% VNR* (*Reference nutritional value according to Regulation 1169/2011)

Administration: Adults: one tablet daily, before food. Children over 3 years old: the contents of one tablet can be mixed with milk, tea, water or food, at room temperature. It will be associated with antibiotics, two hours before or after the first dose of such antibiotics.

Packaging form:

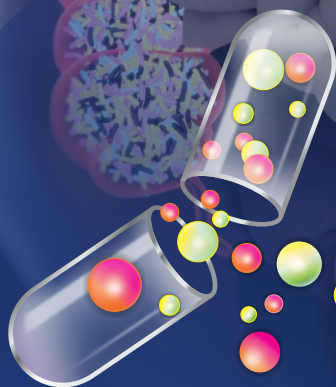
Box with 10 enteric coated tablets.



MEGA BIOTIC®

20 BILLION friends in a Capsule

15 strains of beneficial lactic acid bacteria + ZINC



**THE MOST
VERSATILE PROBIOTIC
THE HIGHEST
NUMBER OF
PROBIOTICS
STRAINS**

Recommended during antibiotic treatment

**Reduces harmful bacteria and restores the
protective intestinal flora**

Stimulates digestion and regulates intestinal transit



DETOXIFICATION

30
cps

REN^{OX}_{Renal}DETOX

COMPLEX FOR KIDNEY DETOXIFICATION AND WATER RETENTION ELIMINATION

The proper functioning of the kidneys is vital for the health of the whole body. Renox Renal Detox® contains **11 specially selected plants, in a unique and exclusive COSMO PHARM® formula**, for the health of your kidneys, with strong diuretic, detoxifying, antiseptic, anti-inflammatory, antispasmodic, hypotensive, tonic and vitalizing effects.

Actions:

- It supports the urinary system health.
- It detoxifies the body.
- It supports the immune system through antiseptic and anti-inflammatory action.
- It has a diuretic, purifying and antioxidant effect.
- It reduces heavy sweating.
- It eliminates excess fluid retained in the body.
- It maintains body weight within normal limits.
- Adjuvant in renal and urogenital tract diseases.
- It helps eliminate urinary "sand" and reduce the risk of urinary bleeding.
- It fights skin oedema and maintains a healthy skin appearance.
- It supports heart function, blood circulation and helps lower blood pressure.
- It supports the body's resistance in case of severe environmental conditions.

Beneficial in:

Water retention, weight gain, detoxification, urogenital tract disorders (cystitis, prostatitis, urethritis, urinary disorders), kidney stones, renal colic, oedema, varicose veins, heart failure, hypertension, hypothyroidism, acne, diseases induced by chemotherapy etc.

Active ingredients / Vegetal Capsule(550 mg): Horsetail / *Equisetum arvense* – 150 mg; Bearberry Leaf / *Arctostaphylos uva ursi* – 16.2 mg, Buchu / *Barosma spp* – 16.2 mg (leaves), Dandelion / *Taraxacum officinale* (roots) – 16.2 mg, Juniper / *Juniperus communis* (fruit) – 16.2 mg, Parsley / *Petroselinum crispum* (leaves) - 16.2 mg Hawthorn / *Crataegus laevigata* (fruit) – 16.2 mg, Nettle / *Urtica dioica* (roots) – 16.2 mg, Butcher's-broom / *Ruscus aculeatus* (rhizomes) – 16.2 mg; Ginger / *Zingiber officinale* (powder of rhizomes) – 16.2 mg; Maize / *Zea mays* (powder) – 16.2 mg.

Administration: Adults: 1 Capsule daily, with food and one glass of water;

Packaging form: Box with 30 vegetal capsules.



30
cps

SILYMARIN

Forte

Equivalent of minimum 2500 mg

The active principle in Milk Thistle is a complex of bioflavonoids (silymarin, silybin, silibianin) that has a remarkable hepatoprotective action.

Actions:

- Silymarin supports the health and natural detoxification of the liver.
- It protects the structure and functions of the liver, as well as the hepatocytes' ability to regenerate, and helps to maintain normal
- It increases the production of antioxidant enzymes (glutathione) that protect the liver from the harmful effects of free radicals.
- It maintains normal bile secretion and elimination by reducing the risk of gallstones.
- It protects the liver from damage caused by: fats, alcohol, hepatotoxic drugs, exposure to pollutants, dyes, preservatives, pesticides, heavy metals.

Beneficial in:

Liver disease: hepatic steatosis, hepatitis, cirrhosis, intoxications; it is administered prophylactically in case of exposure to substances / drugs with toxic risk etc.

Active ingredients / Capsule:

Milk Thistle Extract (equivalent to 2500-3500 mg Milk Thistle fruit) – 100 mg, providing Silymarin – 80 mg.

Administration: 1 – 2 Capsules per day, for a minimum of 8 weeks, after food.

Packaging form:

Flask with 30 capsules.

30
tb

SILYMARIN

14000 mg

Bioflavonoid complex (silymarin, silybin, silibianin) with hepatoprotective action and remarkable detoxifying properties.

Actions:

- Silymarin supports the health and natural detoxification of the liver.
- It protects the liver and supports the regeneration of hepatocytes (liver cells).
- It helps to maintain normal cholesterol levels.
- It contributes to the neutralization of toxic substances in the liver.
- It maintains normal bile secretion and elimination by reducing the risk of gallstones.
- It protects the liver from damage caused by: fats, alcohol, hepatotoxic drugs, exposure to pollutants, dyes, preservatives, pesticides.

Beneficial in:

Liver disease: hepatic steatosis, hepatitis, cirrhosis, intoxications; it is administered prophylactically in case of exposure to substances / drugs with toxic risk etc.

Active ingredients / Tablet: extract 40-50:1 of Milk Thistle fruit (*Silybum marianum*) – 350 mg, of which silymarin – 280 mg and Silybin – 84 mg.

Administration: 1 – 2 Tablets per day, for a minimum of 8 weeks.

Packaging form: Flask with 30 tablets.



30
cps

ALOE VERA equivalent of 5000 mg gel

Aloe Vera, also called by the Egyptians the "plant of immortality", has been used since antiquity for its beneficial effects on health and beauty. A rich source of vitamins and minerals, Aloe Vera has an anti-inflammatory effect and helps to maintain body weight within normal limits.

Actions:

- It increases the body's resistance through immunostimulatory properties.
- It accelerates wound healing and has a sealing effect.
- It stimulates digestion and soothes heartburn.
- It helps the optimal functioning of the digestive system and regulates intestinal transit.
- It protects the liver and drains the gall.
- Essential in liver and blood detoxification.
- It lowers triglycerides and reduces the level of "bad" LDL cholesterol.
- It helps to maintain normal blood glucose levels.
- It slows down cellular aging.
- It reduces fatigue and increases tonus.

Beneficial in:

Digestive disorders (ulcer, gastritis, colitis, indigestion, bloating, flatulence, halitosis, constipation, irritable bowel syndrome), liver disorders (hepatitis, cirrhosis, steatosis), dermatological disorders (boils, acne, dermatitis, psoriasis, herpes), detoxification cures, chemotherapy and radiotherapy etc.

Active ingredients / Capsule: Aloe Vera (*Aloe barbadensis*) leaf extract 200: 1 (equivalent to 5,000 mg of fresh Aloe Vera plant) – 25 mg.

Administration:

Adults: 1 – 2 Capsules per day, after food.

Packaging form: Flask with 30 capsules.

- General tonic
- Antioxidant
- Hepatoprotective
- Moisturizing and protective of the skin
- Natural anti-inflammatory
 - Antitumoral
- Natural Antibiotic
- Immunomodulatory





HEPANOX® Protect|DETOX

Unique complex with powerful detoxifying and liver protective action. It contains Milk Thistle, also called "the saviour of the liver". The flavonoids in the composition of Milk Thistle seeds favour the regeneration of liver cells. The Silybin contained in Milk Thistle prevents the accumulation of toxins in the liver and stimulates the elimination of toxic compounds from the liver cells.

Actions:

- It helps to cleanse the body naturally and
- It prevents hepatotoxic substances (alcohol, harmful substances, heavy metals, free radicals, etc.) from entering the cells.
- It supports the antitoxic function of the liver and the regeneration mechanisms of liver cells. It prevents the accumulation and reduces fat deposits in the liver.
- It protects the cell membrane at liver structures level.
- It supports optimal bile secretion and evacuation.
- It helps to strengthen the immune system.

Beneficial in:

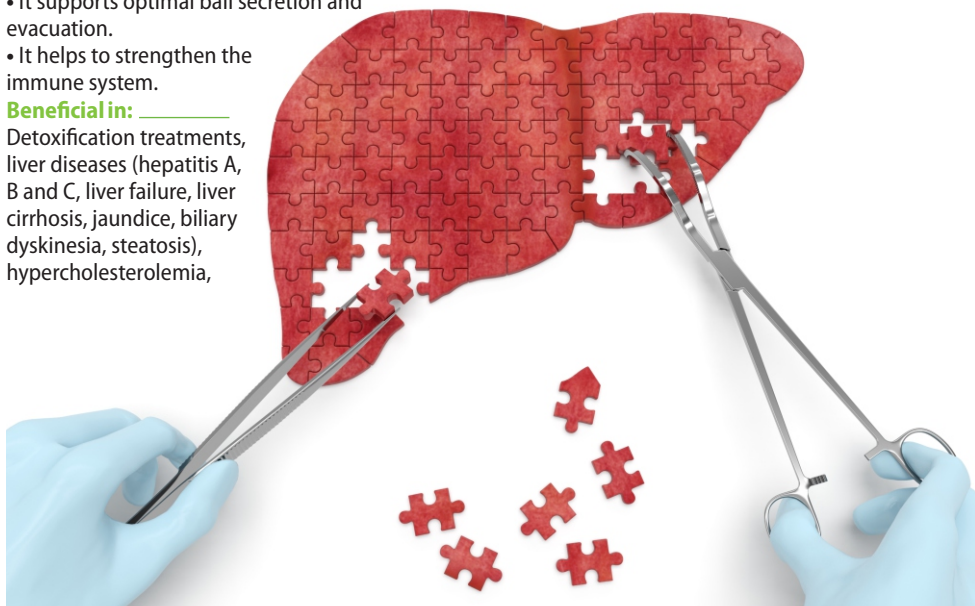
Detoxification treatments, liver diseases (hepatitis A, B and C, liver failure, liver cirrhosis, jaundice, biliary dyskinesia, steatosis), hypercholesterolemia,

atherosclerosis, chronic fatigue, intoxication (alcoholism, smoking, coffee, drugs, toxic fungi, heavy metals) etc.

Active ingredients / Capsule: Choline Bitartrate - 150 mg, Silymarin (Milk Thistle fruit extract) - 150 mg, 10: 1 extract of Burdock root (*Arctium lappa*) - 50 mg, L-methionine - 25 mg, Artichoke extract - 25 mg, 4: 1 extract of Dandelion root (*Taraxacum officinale*) - 25 mg, 10: 1 extract of Magnolia vine fruit (*Schisandra chinensis*) - 25 mg.

Administration: 1 Capsule per day, after food.

Packaging form: Box with 30 capsules.



IMMUNITY





IMUNOSTIM®

A complex formula, rich in alkaloids that stimulate immunity. Alkaloids increase the white blood cells ability to destroy foreign bodies and, at the same time, they protect the body against infections.

Actions:

- It contributes to increasing the body's natural capacity for self-defence, especially during periods of seasonal epidemics (respiratory viruses).
- It stimulates immune activity through the oxindole alkaloids contained in the Cat's claw, which increase phagocytosis. Its strong antimicrobial effect increases by 20% the activity of T cells, and stimulates the synthesis and activity of macrophages.
- It has an antiviral activity (similar to that of interferon).
- It has anti-inflammatory and anti-rheumatic action.
- It accelerates recovery and shortens convalescence.

Beneficial in:

Viral and bacterial infections of the respiratory tract: viroses, tonsillitis, pharyngitis, otitis, colds; urogenital tract infections, musculoskeletal disorders (arthritis, bursitis, tendonitis), allergies etc.

Active ingredients / Tablet: Powder of Cat's claw/ (*Uncaria tomentosa*) – 400 mg, extract 4:1 from bark of Cat's claw/ (*Uncaria tomentosa*) – 100 mg, powder from roots of *Echinacea angustifolia* – 100 mg

Administration: 1 – 3 Tablets per day, after food.

Packaging form: Flask with 30 tablets.



ECHINACEA

Extract

500 mg

Due to its exceptional properties, this plant has an immunomodulatory action on the human body, due to the high content of volatile oils in the roots, but especially the high concentration of polysaccharides in its upper parts.

Actions:

- Natural immunostimulant - it provides protection and increased resistance of the body.
- It supports the body's ability to defend itself by stimulating the production of interferon and lymphocytes.
- It has an antiviral and antibacterial effect.
- It reduces discomfort caused by illness.
- It supports the normal functioning of the respiratory system, prepares the body for any off-season.
- It shortens the convalescence period.

Beneficial in:

Respiratory viroses, flu, colds, immune system support, herpes simplex virus, candidiasis, eczema, convalescence states etc.

Active ingredients / Capsule: Standardised extract of aerial parts of *Echinacea* (*Echinacea spp*) - 500mg, with Polyphenols – 20 mg.

Administration: 1 Capsule daily, with food.

Packaging form: Flask with 30/60 capsules.

A strong immune system is built in time!



NO
ALLERGENS

0
CALORIES



NO
ALLERGENS





ASTRAGALUS

Equivalent of 9000 mg

Astragalus is one of the most powerful herbs that can stimulate the action of interferon in the human body. Interferon is a natural protein that stimulates cell division and differentiation and it can modulate specific components of the immune system.

Actions:

- It helps to strengthen the immune system.
- It prevents colds and upper respiratory tract infections.
- It stimulates endogenous interferon production (stimulates T lymphocytes and NK "natural killer" cells) and normal cell division.
- It improves the functioning of lungs, thymus, spleen and kidneys.

It protects the liver and the cardiovascular system.

- It has strong antioxidant and anti-inflammatory properties.
- Adaptogenic tonic, it increases the ability to respond to stressors.

Beneficial in:

Immunodeficiencies, respiratory viruses, flu, colds, asthma, respiratory tract infections (tonsillitis, pharyngitis, running cold), liver disease (hepatic steatosis, viral hepatitis), antitumor therapies, hypertension, inflammations etc.

Active ingredients / Capsule: 20: 1 extract of Astragalus root (*Astragalus membranaceus*) - 450 mg equivalent to 9000 mg powder, with Polysaccharide 90 mg.

Administration: 1 – 2 Capsules daily, with food.

Packaging form: Flask with 30/60 capsules.



CORDYCEPS

300 mg

Equivalent of 3000 mg

Cordyceps sinensis is known as the miraculous fungus: "larva in winter, plant in summer".

Actions:

- It stimulates the immune system, supports the increase in the number of lymphocytes, especially T cells, as well as the activity of the macrophages.
- It invigorates the cardiovascular system and improves cellular oxygenation.
- It helps to normalise the level of cholesterol and blood sugar.
- It protects the liver and kidneys from toxic agents (medicines), it facilitates the elimination of toxins from the body.
- It reduces the unpleasant manifestations produced by allergens, chemo and radiotherapy.
- It has an adaptogenic and antioxidant effect and supports hormonal balance.
- It increases testosterone and supports libido, sexual energy and virility.
- It increases longevity, tonus, vitality and energy of the whole body.

Beneficial in:

Lung diseases, respiratory viroses, hypercholesterolemia, liver disease, diabetes, antitumor therapies, attenuation of chemo and radiation therapy side effects, sexual dysfunctions etc.

Active ingredients / Capsule: 10:1 dry hydro alcoholic extract of the fungal mycelium (*Cordyceps sinensis*) * equivalent to 3000 mg dry powder containing a guaranteed minimum of 7% cordycepic acid, 8% polysaccharides, 7% mannitol, 0.2% adenosine – 300 mg.

* raw material obtained from certified organic crops.

Administration: 1 – 2 Capsules daily, after food.

Packaging form: Flask with 30/60 capsules.



VEGETARIAN
friendly



30
cps
60
cps

REISHI + SHIITAKE + MAITAKE

The synergistic combination of the three mushrooms, obtained from certified organic crops, ensures a maximum concentration of bioactive substances, polysaccharides, beta glucans, active proteoglycans, vitamins, minerals, essential fatty acids.

Actions:

- It supports the immune system.
- It stimulates insulin secretion and maintains
- It provides cardiovascular, hepatic, renal and
- It helps hormonal balancing.
- It has an adaptogenic and antioxidant effect.
- It improves the unpleasant manifestations produced by allergens, chemo and radiotherapy.
- It increases longevity, tonus, vitality and energy of the whole body.

Beneficial in:

Lung disease, viral and bacterial infections, hypercholesterolemia, diabetes, liver disease, attenuation of chemo and radiation therapy side effects, anxiety, convalescence etc.

Active ingredients / Capsule: cold micro-organised spore powder from Reishi (*Ganoderma lucidum*) * – 100 mg, dry superconcentrated extract 5: 1 from the body of the Maitake mushroom / (*Grifola frondosa*) * – 100 mg with Polysaccharides – 30 mg, dry superconcentrated extract 5: 1 from the body of the Shiitake mushroom (*Lentinula edodes*) * – 100 mg with Polysaccharides – 30 mg.

* raw material obtained from certified organic crops.

Administration: Adults: 1 – 2 Capsules daily, after food.

Packaging form: Flask with 30/60 capsules.

60
cps

VITAMIN D3 2000 UI

Vitamin D3 plays an extremely important role in the proper functioning of the osteoarticular system, strengthening the immune system and maintaining good health.

Actions:

- It helps the absorption and normal use of calcium and phosphorus in the body.
- It contributes to maintaining normal blood calcium levels, preserving the health of the bone system, including teeth, and maintaining normal muscle function.
- It helps to recover the osteoarticular and muscular systems after periods of immobilization.
- It contributes to the prevention and repair of bone density loss.
- It supports the normal functioning of the immune system.
- It participates in the process of cell division.

Beneficial in:

Rickets, osteoporosis, osteomalacia, fractures, immune system support etc.

Active ingredients / Capsule:

Vitamin D3 – 2000 IU.

Administration:

Adults: 1 Capsule daily, with food.

Packaging form:

Flask with 60 capsules.



20
tb


ACEROLA C 500 + *bioflavonoids*

The richest source of natural vitamin C is the fruit of Acerola (tropical cherry), which contains 20-30 times more vitamin C than the orange. The synergistic combination of vitamin C with bio flavonoids has a very strong antioxidant effect. The bioflavonoids from the Lemon fruit, also known as vitamin P, have vitamin-like properties, strong antioxidant functions and are involved in the proper formation and development of cells.

Actions:

- It stimulates immunity and speeds up the cure of colds and flu.
- Strong antioxidant and detoxifying effect on the body and toning and anti-aging action.
- It has an anti-inflammatory, anti-infective and antitoxic role.
- It protects against toxins existing in cigarette smoke.
- It acts as a natural antihistamine, and helps fight allergies.
- It prevents wrinkles and skin aging, maintaining its elasticity and youth.
- It contributes to the formation of connective tissue (collagen) with a role in the development of cartilage and gums.
- It accelerates the wound healing process.
- It improves blood circulation and increases the strength of vascular walls.
- It supports the proper functioning of the cardiovascular system.
- It prevents eye disease and cataracts and protects the retina efficiently.
- It supports the health of the respiratory tract.

- It prevents diseases of the pancreas.
- It contributes to the regeneration of the reduced form of vitamin E.

Beneficial in:

Low immunity, infectious diseases (tonsillitis, pharyngitis), respiratory viroses, colds, flu, allergies, asthma, diabetes, appetite loss, defective growth and development; cardiovascular diseases, capillary fragility, eye diseases; depression, anxiety, asthenia, fatigue, convalescence, premature aging, chemo and radiotherapy, lead poisoning, harmful effects of smoking.

Active ingredients / 1 Chewable Tablet (4.437,33 mg):

Vitamin C – 500 mg, Bio flavonoids – 100 mg (organic complex citrus flavonoid "50" of Lemon fruit – *Citrus lemon* with at least 50% bio flavonoids), Black currant – 25 mg (powder of black currant fruit juice – *Ribes nigrum*), Dog rose – 25 mg (Dog rose fruit powder - *Rosa canina*), Acerola 20 mg (aqueous fruit extract of Acerola – *Malpighia punicifolia* with 25% vitamin C), Rutin – 5 mg (Rutin powder from floral buds of Japanese Acacia – *Sophora japonica*).

Administration:

1 Tablet per day.

Packaging form: Flask with 20 chewable tablets.

VITAMIN C from
ACEROLA FRUIT
the richest
source of
vitamin C

+ BIOFLAVONOIDS
for a superior
absorption



VEGETARIAN
friendly

NO
ALLERGENS

SUGAR
FREE

0
CALORIES

Care for your family's health!



We raise
IMMUNITY®

UROGENITAL



30
cps

UROFORTE®

The active ingredient is a concentrated form of American cranberry extract, which is a rich source of bioflavonoids, phenolic compounds and other natural substances. Long-term administration supports the fight against urinary tract infections.

Actions:

- It supports the urinary tract health.
- It helps to eliminate excess water and toxic substances.
- It lowers the pH and cleanses the contents of the bladder and urethra.
- It prevents the adhesion of pathogens to the walls of the bladder and eliminates the burning sensation caused by toxic metabolites of bacteria, viruses, fungi.
- Long-term administration supports the fight against urinary tract infections and prevents recurrences.
- Vitamin C contributes to the normal functioning of the immune system.
- Vitamin B6 has a diuretic effect.

Beneficial in:

Acute, chronic, recurrent cystitis, urethritis, pyelonephritis, urinary incontinence etc.

Active ingredients / Capsule: Vitamin C – 250 mg, American cranberry (concentrated fruit juice powder) – 100 mg, Bear berry extract – 50 mg, Potassium citrate – 50 mg, Citric acid – 50 mg, Vitamin B6 – 25 mg, American cranberry extract – 10 mg, Buchu extract – 10 mg, Parsley, fruit oil – 10 mg.

Administration: 1 – 2 capsules per day if necessary and at least 2 litres of fluids per day, from the first signs of urinary discomfort (pain, frequent urination, irritation) until their disappearance.

Packaging form: Flask with 30 capsules.

30
cps

PROSTATO Fort®

Unique formula of substances with beneficial effects in prostate diseases. It inhibits cell multiplication and leads to a reduction of prostate volume and the associated symptoms.

Actions:

- It reduces the frequency of night urination.
- It contributes to the normal functioning of the urinary tract and prostate.
- It helps to decongest the prostate and reduce the residual volume of urine, the need for frequent, incomplete, and difficult urination.
- It contributes to the normal performance of sexual activity.
- Zinc helps maintain fertility and reproduction, but it also maintains normal blood testosterone levels. Vitamin E (the "anti-sterility vitamin") is involved in the fertility process and sperm formation.
- Recommended for all men after the age of 40.

Beneficial in:

Benign prostatic hypertrophy, bacterial and non-bacterial prostatitis, reduction of unpleasant functional manifestations of the prostate adenoma (frequent urination, haematuria, dysuria, urinary and testicular infections), disorders of sexual dynamics, impotence etc.

Active ingredients / Capsule: Pumpkin seed oil – 250 mg, Dwarf – palm extract – 160 mg, L-Glutamic Acid – 100 mg, Glycine – 100 mg, L-alanine – 50 mg, *Pygeum africanum* extract – 40 mg, Beta sitosterol – 25 mg, Vitamin E – 33,33 mg, Zinc – 15 mg.

Administration: 1 Tablet per day, after food, for a period of at least 45 days, preferably 120 days. Alcohol and milk should be avoided during administration.

Packaging form: Flask with 30 capsules.



TONIC & VITALIZING



30
tb
60
tb

KOREAN GINSENG

Equivalent of 1000 mg

Korean ginseng / Panax ginseng is also called "The elixir of vitality." The plants that allow the body to tolerate increased stress have been used for thousands of years in traditional medicine. These plants are known in Chinese medicine to improve the qi, and Ayurveda calls them rasayana, a Sanskrit word with the literal meaning of: the path (āyana) of essence (race). In Europe, they are known as tonics. The concept of adaptogen was implemented only in the twentieth century. The origin of the term "adaptogen" is related to the body's ability to adapt to various stressors.

Actions:

- It supports memory and cognitive functions, increases the capacity for physical and intellectual effort.
- It helps increase the body's self-defence capacity, its physical and mental resistance.
- It improves blood circulation.
- It promotes metabolic and detoxification processes.
- It contributes to the improvement of lipid and carbohydrate metabolism (normoglycemic).
- It contributes to increasing appetite, libido and normal sexual activity.
- It protects against oxidative stress and delays natural aging processes.

Beneficial in:

Fatigue, stress, male sexual disorder, erectile dysfunction, flu etc.

Active ingredients / Tablet:

10: 1 super concentrated extract of Korean Ginseng root (*Panax ginseng*) equivalent to 1000 mg of root – 100 mg.

Administration:

1 – 2 Tablets per day.

Packaging form: Flask with 30/60 tablets.



Longevity
Vitality
Aphrodisiaque





Siberian GINSENG

The therapeutic properties of this medicinal plant, also called “the root of life”, have successfully consecrated it as tonic, energizing, aphrodisiac, anti-aging, immunostimulant and anti-inflammatory.

Actions:

- Adaptogen tonic, it increases the body's ability to adapt to stress.
- It supports memory and cognitive functions.
- It improves intellectual and physical performances.
- It has hepatoprotective and antisteatotic action by favouring metabolic processes and detoxifying reactions.
- It has hypoglycaemic and hypocholesterolemic action (by stimulating lipid metabolism).
- It contributes to increasing appetite, libido and normal sexual activity.
- It has a fertilizing action in women (accelerates the ovarian development of the egg cell).
- It protects against oxidative stress and delays the natural aging processes.

Beneficial in:

Fatigue, stress, overwork, asthenia, convalescence, liver disease, hypercholesterolemia, male sexual disorder, erectile dysfunction, impotence, prostate hypertrophy, infertility etc.

Active ingredients / Capsule:

Siberian Ginseng– 500 mg.

Administration: 1 – 3 Capsules per day after food. It is recommended to drink 1 – 2 litres of liquids a day.

Packaging form: Flask with 30 capsule.



SIBERIAN GINSENG

Equivalent 1000 mg

The Siberian Ginseng is also called the “root of life”, being considered the most active species of Ginseng.

Actions:

- It supports memory and cognitive functions, increases the capacity for physical and intellectual effort.
- It helps to increase the body's self-defence capacity.
- It reduces fatigue and the effects of stress.
- It favours metabolic and detoxification processes.
- An adaptogen tonic, it increases the body's ability to adapt to stress.
- It contributes to increased appetite, libido and normal sexual activity.
- It protects against oxidative stress and delays natural aging processes.

Beneficial in:

Fatigue, stress, overwork, asthenia, male sexual disorder, erectile dysfunction, flu.

Active ingredients / Tablet: 10: 1 extract of Siberian Ginseng root (*Eleuthero coccus senticosus*) – 100 mg, equivalent to 1000 mg of root.

Administration: 1 – 2 Tablets per day.

Forma de ambalare: Flask with 30/60 tablets.





*The PUREST and
most CONCENTRATED*



ASHWAGANDHA
KSM-66® 500 mg

Ashwagandha (Indian Ginseng) is an adaptogenic plant, known and used in Indian medicine for thousands of years as a natural source of energy and vitality.

ASHWAGANDHA® KSM-66 from COSMO PHARM® is the extract with the purest and most concentrated form of Ashwagandha in the world, having had the most numerous clinical studies performed. It is produced by using a unique patented extraction process, based on Green Chemistry principles, without the use of alcohol or any other chemical solvent.

Actions:

- It supports nervous system functions.
- It improves learning, memorization and concentration processes.
- A natural anti-depressive, it fights stress, anxiety and panic attacks.
- It emotionally balances and stimulates relaxation without slowing down mental processes.
- It helps during fatigue and exhaustion periods.
- It helps to recover from trauma or mental illness.
- It strengthens the immune system.
- It improves male sexual function. Increases male fertility and potency.
- It maintains the health of male and female reproductive system.
- It increases the body's endurance and improves athletes' performance.
- It increases weight, muscle endurance and increases muscle tone.
- It is a good antioxidant, eliminates free radicals and has an anti-aging effect.
- It supports the cardiovascular and respiratory system.
- It lowers blood pressure and cholesterol.
- It helps maintain a healthy thyroid gland.

Beneficial in:

Improved memory, attention and focus, depression, anxiety, insomnia, fatigue, stress, infertility, impotence, mental and physical exhaustion, thyroid, respiratory diseases.

Active ingredients / Vegetal Capsule (630 mg): ASHWAGANDHA® KSM-66, a standardised Ashwagandha root extract (*Withania somnifera*) – 500 mg, guaranteed with over 5% (25 mg) withanolides.

Administration: 1 – 2 Capsules per day, with food, with a glass of water.

Packaging form: Flask with 30 vegetal capsules / box with 30 vegetal capsules.

IMPROVED MEMORY



REDUCED STRESS
AND ANXIETY



INCREASED
IMMUNITY



SEXUAL
PERFORMANCE



ENERGY AND
ENDURANCE



Clinically proven efficiency

ASHWAGANDHA KSM-66[®] 500 mg

WORLD'S BEST ASHWAGANDHA

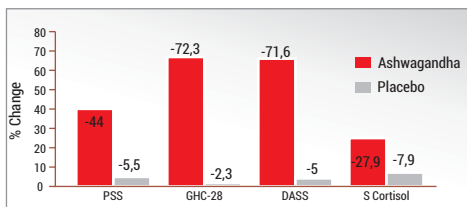
I. Clinically proven efficiency in reducing stress and anxiety.*

The prospective, randomised, double-blind, placebo-controlled study aimed to measure the following parameters:

- Serum cortisol levels
- Perceived stress index (PSS score)
- Overall health questionnaire score -28 (GHQ-28)
- DASS) - Depression-Anxiety-Stress scale

Objective	Dosage	Duration	No. of subjects
Assessment of the effectiveness and safety of Ashwagandha KSM-66 in reducing stress and anxiety and improving the general condition of adults under stress.	300 mg (2 doses/day)	8 weeks	64 -41 (64%) men and 23 (36%) women - healthy patients aged between 18 and 25 years old

Improvement in percentages of the parameters measured at the end of the 8 weeks of study - Ashwagandha KSM[®] 66 vs Placebo



Conclusion: The results of this study suggest that the Ashwagandha root extract - KSM 66[®], in high concentration, improves efficiently the human body's resistance to stress and therefore the quality of life. Ashwagandha KSM-66[®] can be used safely as an adaptogen by adults under stress. **

Indian Journal of Psychological Medicine, 2012. A prospective, randomised double-blind, placebo-controlled study of safety and efficacy of a high-concentration full-spectrum extract of ashwagandha root in reducing stress and anxiety in adults.

**The study was conducted in accordance with the Indian Council for Medical Research Guidelines for research in humans (ICMR-GCP) and the Declaration of Helsinki (2008), and was approved by the institutional review committee at Asha Hospital in Hyderabad, India.

II. Clinically proven ability to improve memory and cognitive function.**

Objective	Dosage	Duration	No. of subjects
Evaluation of the effect of Ashwagandha KSM-66 on memory (working, immediate and lasting), visual-spatial processing, performative function, attention and speed of information processing	300 mg (2 doses/day)	8 weeks	51 healthy patients

A prospective, randomised, double-blind, placebo-controlled study was performed on 51 adults over the age of 35 years old.

Results: After eight weeks of study, the Ashwagandha group showed significant improvements compared to the placebo group in both immediate and long-term memory, as shown by the Wechsler Memory Scale III subtest scores for logical memory I ($p = 0.007$), verbal associates I ($p = 0.042$), images I ($p = 0.006$), logical memory II ($p = 0.006$), associated verbal associates II ($p = 0.031$) and family presenting II ($p = 0.006$).

The treatment group also proved a significantly higher improvement in performative function and information processing speed indicated by the scores dealt by Eriksen Flanker ($p = 0.002$), the Wisconsin Card Sort test ($p = 0.014$), A test ($p = 0.006$) and the Clockworth Clock test ($p = 0.009$).

Conclusions: Ashwagandha is effective in enhancing both immediate and general memory in people with MCI (minor cognitive decline), as well as improving performative function, attention and speed of information processing.

*Journal of Dietary Supplements, 2017, Efficacy and Safety of Ashwagandha (Withania somnifera (L.) Dunal) Root Extract in Improving Memory and Cognitive Functions.

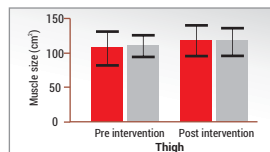
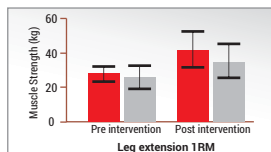
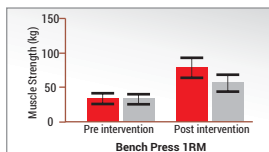
III. Clinical trial for muscle endurance and recovery.*

Objective	Dosage	Duration	No. of subjects
Evaluation of the effect of Ashwagandha KSM-66 on muscle strength, mass and recovery as an adjuvant to physical endurance	300 mg (2 doses/day)	8 weeks	57 healthy male patients aged between 18 and 50 years old

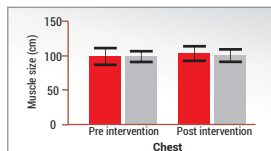
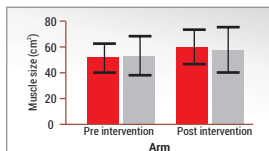
The prospective, randomised, double-blind, placebo-controlled study aimed to measure the following parameters:

- Serum testosterone levels
- Muscle mass (1RM- maximal sustainable single repetition load - 1RM)
- Sizes of the muscles
- Percentage of body fats
- Serum creatine kinase levels

Clinically proven efficiency



■ Ashwagandha
■ Placebo



Compared to placebo subjects, the Ashwagandha KSM-66® group showed significantly better results in: increased muscle strength and significantly more visible results in increased size of the muscle in the arms.

At the same time, the subjects who received Ashwagandhashowed a substantial

"Journal of the International Society of Sports Nutrition, 2015.Examining the effect of Withania somnifera Supplementation on Muscle Strength and Recovery: A Randomized Controlled Trial."

decrease in exercise-induced muscle damage, indicated by stabilization of serum creatinine kinase, significantly higher testosterone levels and a significant decrease in body fat percentages.

Conclusions: The study reports that supplementation with Ashwagandha is associated with significant increases in muscle mass and that it is recommended in challenging athletic training.

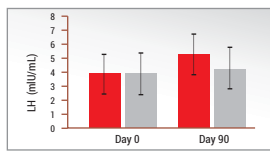
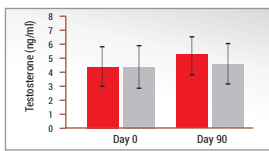
IV. Clinically proven utility in improving male sexual performances.*

Objective	Dosage	Duration	No. of subjects
Assessment of the effectiveness and safety of Ashwagandha KSM-66 in improving sexual function in men.	225 mg (3 doses/day)	12 weeks	46 Healthy patients

The prospective, randomised, double-blind, placebo-controlled study aimed to measure the following parameters:

- Sperm concentration - increase of 167%
- Volume of sperm

- Motility of the sperm
- Serum testosterone levels
- Serum levels of luteinizing hormones



■ Ashwagandha-treated group (n=21) ■ Placebo-treated group (n=25)

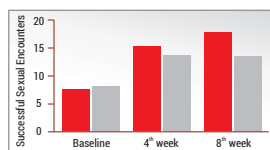
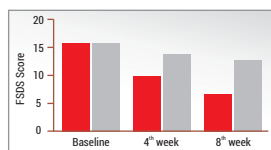
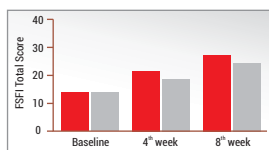
**Evidence-Based Complementary and Alternative Medicine, 2013. Clinical Evaluation of the Spermatogenic Activity of the Root Extract of Ashwagandha (Withania somnifera) in Oligospermic Males: A Pilot Study. "*

Conclusion: Sperm concentration among male patients receiving Ashwagandha KSM-66® increased substantially (167%), as did sperm volume (53%) compared to the Placebo group. The study also showed an increase of: 57% in sperm motility, 17% in serum testosterone levels and 34% in serum luteinizing hormone levels.

V. Clinically proven efficiency in improving female sexual health.*

Objective	Dosage	Duration	No. of subjects
Study - Ashwagandha KSM-66 effects in improving the sexual function of healthy women.	300 mg (3 doses/day)	8 weeks	50 Healthy patients

Efficiency measures: • The index of female sexual function (FSFI) • Female Sexual Distress Scale (FSDS) • The number of total and successful

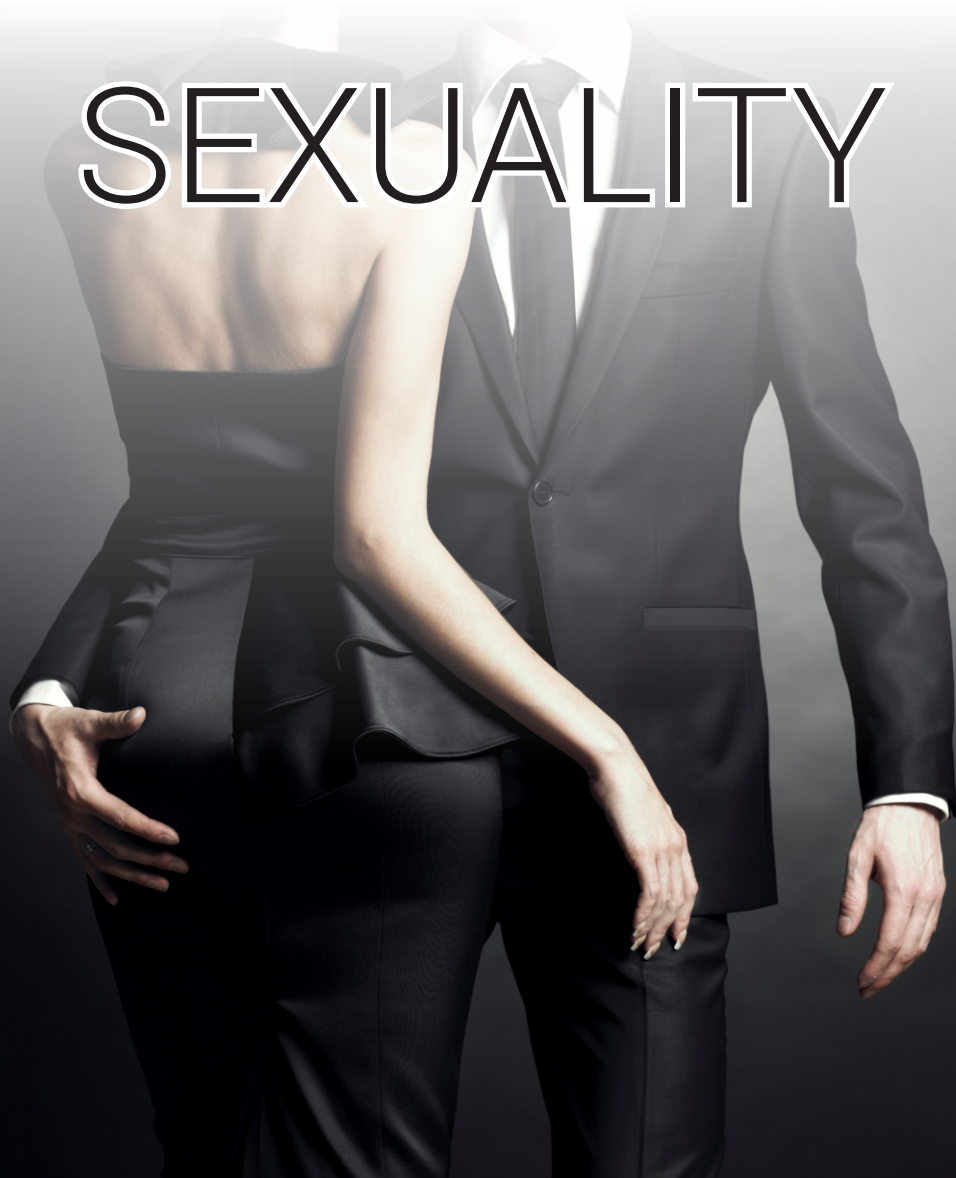


■ Ashwagandha
■ Placebo

Conclusion: Ashwagandha KSM-66 generated a significant improvement in sexual function among female subjects. This produced a 75.8% increase in total FSFI scores ($p < 0.001$) compared to the baseline. FSFI scores for arousal, lubrication, orgasm and satisfaction improved significantly from the baseline score ($p < 0.001$) by 62.4%, 59.4%, 82.4% and 62.4%, respectively. FSDS scores: Ashwagandha KSM-66 reduced sexual discomfort for female subjects. The extract produced a 60.9% reduction in baseline FSDS scores. Ashwagandha KSM-66® also resulted in a 126.1% increase of the total number of successful sexual intercourse.

**BioMed Research International, 2015. Efficacy and Safety of Ashwagandha (Withania somnifera) Root Extract in Improving Sexual Function in Women: A Pilot Study".*

COUPLE & SEXUALITY





POTENT

Unique combination of natural extracts with beneficial effect on sexual function and erection.

Actions:

- It contributes to the maintenance of a natural sexual activity.
- It favours sexual desire and capacity.
- It supports the health of the reproductive organs.
- It contributes to urinary tract health, helps to prevent kidney stones.
- It supports the normal functioning of the nervous system and mental health.
- It helps to reduce fatigue and exhaustion, supports physical and mental performance.
- It helps to strengthen the immune system.
- It is not addictive.

Beneficial in:

Sexual dysfunctions, erectile disorders; decreased libido; chronic fatigue.

Active ingredients / Capsule:

L-Arginine HCl – 250 mg, freeze-dried Royal Jelly – 100 mg, Korean Ginseng (*Panax ginseng*) extract – 50 mg, Maca (*Lepidium meyenii*) extract – 50 mg, Puncture Vine extract (*Tribulus terrestris*) – 25 mg, Vitamin B3 – 16 mg.

Administration:

1 Capsule three times a day.

Meant only as **treatment** for men.

Not recommended to professional athletes.

Packaging form:

Box with 30 capsules, flask with 30 capsules.

VIRIL[®] STRONG

VIRIL Strong[®] is the most complex natural product with an erection stimulating effect. With a UNIQUE formula, it contains active ingredients from 9 plants that support virility and intense sexual pleasure.

Standardised extracts from natural sources of: Puncture Vine, Fo-Ti, Maca, Cow Parsnip, Damiana, Goji, Muira puama, Indian ginseng/ Ashwagandha, Siberian ginseng, support intense sexual intercourse.

Actions:

- It has an aphrodisiac effect.
- It increases libido and duration of intercourse without creating addiction or side effects.
- It increases the level of sexual performance and the quality of the sexual intercourse.
- It increases limb strength.
- It amplifies and prolongs sexual pleasure.
- It helps fight erectile dysfunction, prevents premature ejaculation.
- It increases vitality, energy and resistance to stress
- It contributes to the health of the urinary tract.
- It supports the health of the reproductive organs.

Beneficial in:

It amplifies sexual pleasure, prevents sexual dysfunction, erectile disorders, chronic fatigue, builds stress resistance.

Active ingredients / Tablet (1000mg): 20:1 extract of Puncture Vine (*Tribulus terrestris*) – 64 mg; 20:1 Fo-Ti (*Poligonum multiflorum*) root extract – 64 mg; 20:1 extract of Maca (*Lepidium meyenii*) root – 64 mg; 20:1 extract from the root of Cow Parsnip (*Heracleum sphondylium*) – 64 mg; 20:1 extract from Damiana (*Turnera difussa*) leaves – 32 mg; 20:1 extract of Goji berries (*Lycium barbarum*) – 32 mg; 20:1 extract of the bark of Muira puama (*Ptychopetalum olacoides*) – 32 mg; 20:1 extract of Indian Ginseng / Ashwagandha (*Withania somnifera*) root – 24 mg; 20:1 extract from Siberian Ginseng root (*Eleutherococcus senticosus*) – 24 mg.

Administration: Adults: 2 Tablets, 15 – 60 minutes before the sexual intercourse. **Immediate effect.**

Forma de ambalare: Box with 4 tablets.



VITAMINS & MINERALS



30
tb

PRENATAL

A complex combination of vitamins and minerals that provide the essential daily intake for the optimal functioning of the pregnant woman's body.

Actions:

- It supports the increased need for nutrients during pregnancy, both for the pregnant woman and the foetus.
- It contributes to the harmonious development and birth of a beautiful and healthy child.
- It provides the optimal need of vitamins and minerals for pregnant or breastfeeding women.
- Calcium contributes to the normal functioning of the muscular system. Iron supports the normal transport of oxygen in the body. Zinc contributes to the normal synthesis of DNA and the maintenance of normal fertility and reproduction.
- Vit. A contributes to the process of cell differentiation. Vit. C increases the absorption of iron. Vit. E helps protect cells against oxidative stress. Vit. D3 participates in the process of cell division.
- The B vitamins group contributes to the normal functioning of the heart, the nervous system, the maintenance of mental health, the formation of red blood cells, the regulation of hormonal activity and the reduction of fatigue.
- Folic acid is necessary for the formation of the placenta and the development of the embryo, it helps to prevent birth defects (spina bifida) and stimulates milk secretion.

Beneficial in:

Pregnant women, as it covers 100% of both the needs of the pregnant woman and the foetus, contributing to its harmonious development, as well as for breastfeeding women.

Active ingredients / Tablet: Calcium – 200 mg, Vit. C – 100 mg; Iron – 60 mg; Zinc – 25 mg; Vit. B3 – 18 mg; Vit. E – 8.1 mg; Vit. B6 – 2.6mg, Vit. B1 – 1.84 mg; Vit. B2 – 1.7 mg; Vit. A – 1.2 mg; Folic acid – 800 mcg; Vit. D3 – 10 mcg (400 IU); Vit. B12 – 4 mcg.

Administration: 1 Tablet per day, before food.

Packaging form: Flask with 30 tablets.

30
tb

Essential VITA-MIN

Essential Vita-Min contains 20 natural, well-balanced active principles that ensure the daily intake of vitamins and minerals essential for the optimal functioning of the body.

Actions:

- It increases immunity and endurance.
- It maintains the health of the nervous system and strengthens the cardiovascular system.
- It has hepatoprotective and detoxifying action.
- It regulates metabolism.
- It has antioxidant action, neutralizing free radicals, which are harmful to the body.

Beneficial in:

Anaemia, asthenia, decalcification, hypocalcaemia, osteoporosis, spasm, overwork, fatigue, avitaminosis, nutritional deficiencies, unbalanced or restrictive diet, stress, convalescence, etc.

Active ingredients / Tablet: Calcium – 250 mg, Magnesium – 100 mg, Vitamin E - 15 IU, Vitamin B3 - 10 mg, Vitamin B5 – 5 mg, Iron – 5 mg, Zinc – 5 mg, Vitamin B6 – 2 mg, Vitamin B2- 1.7 mg, Vitamin B1 – 1.5 mg, Copper – 1 mg, Manganese – 1 mg, Vitamin A – 2500 IU, Folic acid – 200 mcg, Iodine – 75 mcg, Selenium – 50 mcg, Chromium – 50 mcg, Biotin – 30 mcg, Vitamin B12 – 6 mcg, Vitamin D3 – 200 IU.

Administration: 1 – 2 Tablets per day.

Packaging form: Flask with 30 tablets.



30
tb


GERIATRIC

Vita-Min

An optimal combination of vitamins and minerals, specially designed to invigorate and strengthen the body.

Actions:

- Revitalizing and energizing complex.
- Corrects any metabolic disorders occurring pursuant to the age-specific growing need related to insufficient food input or uptake disorders.
- Supports the health of the cardiovascular system and the nervous system.
- Maintains the health of bones and teeth and precludes osteoporosis.
- Increases mental efficiency.
- Stimulates cellular breathing and body immunity, while offering infection protection.
- Increases body endurance and delays the natural aging process.

Beneficial in:

Anaemia, avitaminosis, unbalanced diet, hypocalcaemia, asthenia, overexertion, mental and physical fatigue, convalescence, stress, degenerative disorders, osteoporosis etc.

Active ingredients / Tablet: Calcium – 200 mg; Magnesium – 100 mg; Potassium – 80 mg; Chlorine – 72 mg; Vitamin C – 60 mg; Phosphorus – 49 mg; Vitamin E – 33.13 mg; Vitamin B3 – 20 mg; Zinc – 15 mg; Vit. B5 – 10 mg; Iron – 9 mg; Vit. B6 – 3 mg; Manganese – 2.5 mg; Copper – 2 mg; Vit. B2 – 1.7 mg; Vit. A – 1.8mg; Vit. B1 – 1.5 mg; Folic acid – 200 mcg; Iodine – 150 mcg; Chromium – 100 mcg; Biotin – 30mcg; Molybdenum – 25mcg; Selenium – 25 mcg; Vit. D3 – 10 mcg; Vit. K1 – 10 mcg; Vit. B12 – 2.5 mcg.

Administration: *Adults:* 1 tablet per day, after food, for people over 40.

Packaging form: Flask with 30 tablets.

NO
ALLERGENS

0
CALORIES

30
tb


Multi MINERALS

A balanced combination providing one's daily intake of essential minerals for the proper functioning of the body.

Actions:

- It provides the daily intake for maintaining the body's optimal state.
- Calcium and Magnesium regulate the normal functioning of the bone, muscle and nervous systems.
- The iodine regulates the proper functioning of the thyroid.
- Zinc is perfect for immunity, maintaining fertility and reproduction.

Beneficial in:

Anaemia, nutritional shortages, fatigue, physical or nervous breakdowns, stress, convalescence, infectious diseases, osteoporosis, excessive loss of minerals (diarrhoea, vomiting, excessive sweating) etc.

Active ingredients / Tablet: Calcium – 133.4 mg; Magnesium – 66.7 mg; Phosphorus – 16.7 mg; Potassium – 10 mg; Zinc – 6.7 mg; Iron – 3 mg; Copper – 1.67 mg; Manganese – 1.67 mg; Iodine – 50 mcg.

Administration:

Adults: 1 tablet per day, after food.

Packaging form:

Flask with 30 tablets.

0
CALORIES

Multi VITAMINS MINERALS

30
tb

Complex product consisting of 13 vitamins and 12 minerals, specifically designed to invigorate and strengthen the body.

Actions:

- It provides the daily intake for maintaining the body's optimal state.
- It increases body vitality and energy.
- Immunostimulant and hepatoprotective.
- It strengthens the cardiovascular system.
- It maintains the nervous system healthy and relieves stress.
- It increases bone and joint resistance.
- It has antioxidant effects, delays the natural aging process.

Beneficial in:

Anaemia, nutritional shortages, fatigue, physical or mental breakdowns, stress, convalescence,

infectious diseases, osteoporosis, excessive loss of minerals (diarrhoea, vomiting, excessive sweating) etc.

Active ingredients / Tablet:

Calcium – 100mg, Vit. C – 75 mg, Magnesium – 50 mg, Vit. E – 30 mg, Potassium – 25 mg, Vit. B3 – 20mg, Phosphorus – 20 mg, Zinc – 15 mg, Vit. B5 – 10 mg, Iron – 9 mg, Vit. B1 – 2 mg, Vit. B2 – 2 mg, Vit. B6 – 2 mg, Vit. A + beta-carotene – 1.5 mg, Manganese – 1 mg, Copper – 1 mg, Folic acid – 400 mcg, Iodine – 150 mcg, Biotin – 60 mcg, Vit. K – 50 mcg, Selenium – 50 mcg, Chromium – 50 mcg, Molybdenum – 50 mcg, Vit. D3 – 10 mcg, Vit. B12 – 6 mcg.

Administration:

Adults: 1 Tablet per day, after food.

Packaging form: Flask with 30 tablets.



ANTIOXIDANTS



30
cps

VITAMIN E

Natural 400 UI

Natural Vitamin E, also called the “fertility vitamin”, plays an essential part in the body's reproductive function health. Having a strong antioxidant effect, Vitamin E protects cell membranes, maintains cell integrity against the destructive actions of free radicals (fights against oxidative stress), thereby preventing several forms of cancer (digestive, ovarian and mammal) and slowing down the aging process.

Actions:

- It prevents sterility by favouring spermatogenesis and the ovary function.
- It reduces premenstrual and menopause syndromes.
- It supports the immune system.
- Strong antioxidant and anti-ageing effects.
- It protects the skin against damages caused by free radicals and UV rays.
- It speeds up the healing of wounds and burns.
- It protects effectively the retina and helps to maintain optimal sight.
- Cardio protective and vasodilator, it maintains the health of blood vessels.
- It decreases cholesterol level and it is hepatoprotective.

Beneficial in:

infertility, sexual dysfunctions, dysmenorrhea, menstrual disorders, menopause, uterine fibroids, ovarian and mammal cysts, pregnancy and breastfeeding, cardiovascular illnesses, coronary diseases, varicose veins, haemorrhoids, spasmophilia, ascites, low immunity, disseminated lupus erythematosus, shingles, bronchial asthma, cancer.

Active ingredients / 1 Soft-shelled capsule (550 mg): Natural Vitamin E (D-Alpha Tocopherol) 294.1 mg (2451% VNR*)

Administration: 1 capsule per day, with food, with a glass of water.

Packaging form: Flask with 30 capsules.

30
cps

GREEN TEA

2000

Green Tea is a food supplement with a high concentration of essential antioxidants which contribute to maintaining body health, a young skin and tone, and getting rid of that extra weight.

Actions:

- Reduces oxidative stress by controlling the negative effects of free radicals.
- Slows down aging, controls the effects of pollution: cigarette smoke, exhaust gases, UV rays.
- Helps to maintain the skin elasticity and controls swelling.
- It is a diuretic, assists in the proper operation of kidneys and prevents water retention.
- Polyphenols accelerate the metabolism and help maintain a slim body.
- Regulate the bowel activity, provide the removal of toxins.
- Contribute in getting rid of the “craving” for something sweet and reduces blood sugar levels.
- Physical and mental energiser and toner.
- Due to its L-Theanine content, it increases the attention span, the ability to memorise and helps improve physical tone.
- Contains antioxidants named catechins which reduce the risk of cardiovascular illnesses, thereby protecting cardiac health.
- Reduces blood cholesterol, reduces “bad” (LDL) cholesterol
- The increased catechin content and, specifically, EGCG (Epigallocatechin-3gallate) contributes to the increase in insulin sensitivity.
- Supports the proper operation of the pancreas.
- Good adjuvant in chemo- and radiotherapy.

Beneficial in:

Invigorating and energizing the body, chronic fatigue and depression; reduces “bad” LDL cholesterol, losing excess weight; decrease in water retention; body detoxification, protects the body against free radical attacks, prevention of premature wrinkles in case of extended exposure to sun and ultraviolet (UV) rays.

Active ingredients / 1 Soft-shelled capsule (550 mg): Green tea extract (*Camellia sinensis*) 100 mg, equivalent of 2000 mg of leaves.

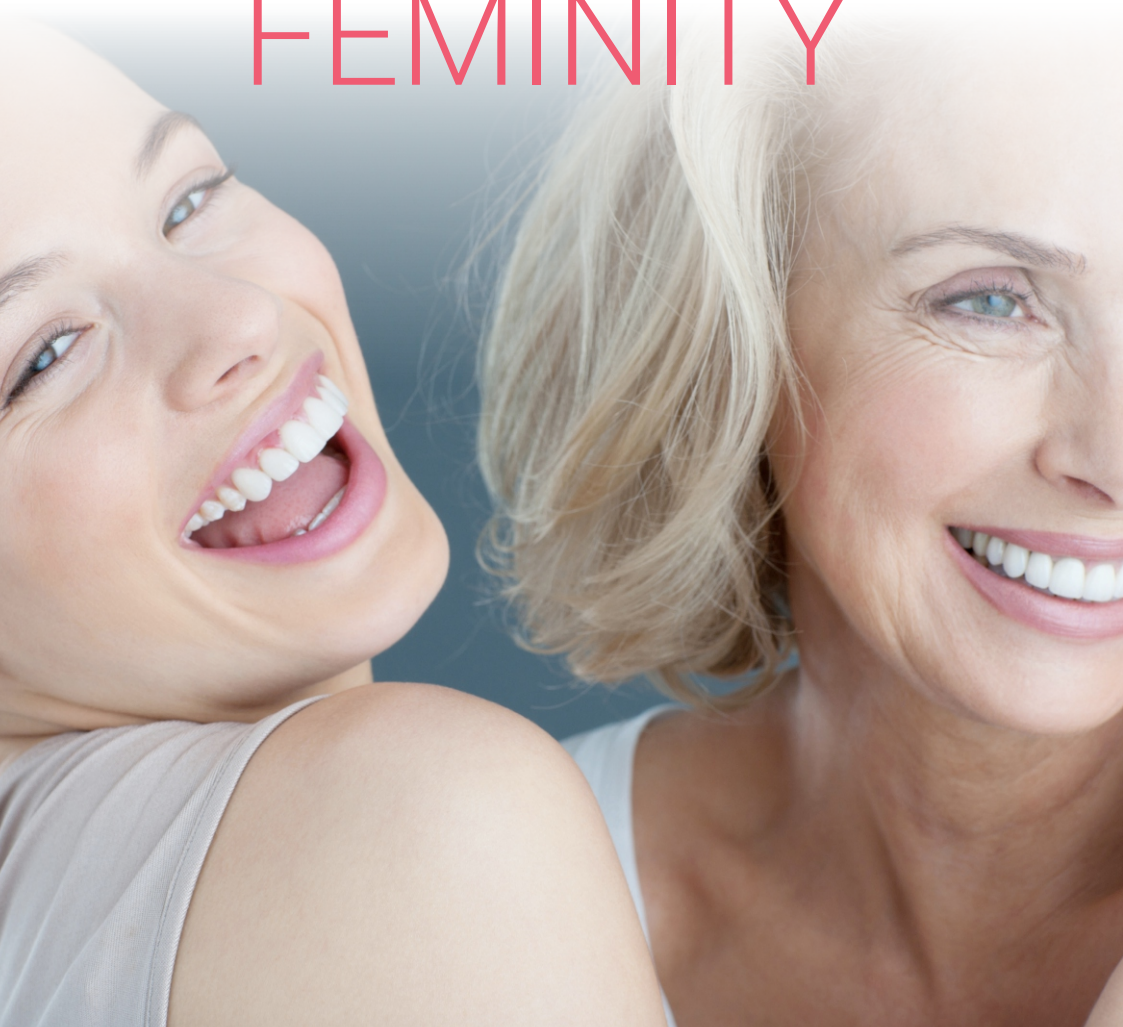
Administration: 1 – 2 capsules per day, preferably in the morning, before breakfast, with plenty of liquid.

Packaging form: Flask with 30 vegetal capsules.



VEGETARIAN
friendly

BEAUTY & FEMINITY



30
cmp

with
Collagen
Hyaluronic acid
Coenzyme Q10
& Vitamins

SUPER BEAUTY®

Beauty Support Formula

SUPER BEAUTY® is a combination of 18 natural concentrated ingredients, indispensable for highlighting beauty and health: Vitamin C, Complex B and ingredients such as collagen, hyaluronic acid, coenzyme Q10, zinc, iron, selenium, folic acid, antioxidants (Field Horsetail, grape seeds, spirulin).

SUPER BEAUTY® revitalises the skin, regenerates hair and strengthens nails.

Actions:

- It improves skin structure, maintains the suppleness, elasticity and luminosity of the skin.
- It allows efficient production of collagen and elastin and stimulates hyaluronic acid synthesis.
- It offers the skin with a protective antioxidant barrier.
- It corrects signs of aging and slows down their occurrence.
- It repairs damages caused by environmental factors: blue light, UV radiation, pollution, stress, fatigue.
- It contributes in the evenness of the skin colour.
- It hydrates the scalp and stimulates hair growth.
- It strengthens hair, restores natural shine and density.
- It repairs hair in-depth and contributes in reducing hair fall.
- It strengthens and restructures nails and supports their growth.
- The Vitamin B Complex provides the normal and healthy operation of the central nervous system, body development and cell division.
- It reduces fatigue, exhaustion and maintains a normal energetic metabolism.
- Zinc aids in the normal operation of the immune system.
- It maintains visual accuracy.
- It contributes in the health of the conjunctive tissue, cartilage and joints.
- It participates in the natural regeneration process of joint cartilage, tissue and ligaments.
- It reduces joint recovery times further to physical activities or traumas.
- It helps in maintaining the health of bones and teeth.
- It improves the performance of the cardiovascular system.
- It improves the operation of the lymphatic system, thereby favouring the elimination of toxins.

Beneficial in:

Revitalizing and rejuvenating dry and dehydrated skin, fine wrinkles, hair regeneration; toneless, shiny- and elastic-free hair; increase in nail resistance, brittle, fragile, exfoliated nails.

Active ingredients / 1 film-coated Tablet: : Collagen – 200 mg; Hyaluronic acid – 20 mg; Field Horsetail extract – 25 mg; Pomegranate extract – 20 mg; Vitamin C – 20 mg; Vitamin B3 – 16 mg; Zinc – 15 mg; Spirulin powder – 15 mg; Coenzyme Q10 – 10 mg; Iron – 9 mg; Grape seeds extract – 4 mg; Vitamin B2 – 1.4 mg; Vitamin B6 – 1.4 mg; Vitamin B1 – 1.1 mg; Copper – 0.7 mg; Folic acid – 200 mcg; Selenium – 55 mcg; Vitamin B12 – 2.5 mcg.

Administration:

Adults: 1 film-coated tablet per day, with food.

Packaging form:

Box containing 30 film-coated tablets.

 **TOTAL CARE®**



30
tb60
tb

HYALURONIC ACID

100 mg

Hyaluronic acid is a protein present in all tissues of the body, and its concentration naturally decreases with age. It is a biological moisturizer for the skin and an important component of the cartilage.

Actions:

- Contributes to collagen synthesis and tissue regeneration.
- Maintains the suppleness, tone and elasticity of the skin.
- Delays the appearance of wrinkles and premature aging of the skin.
- Helps heal wounds faster and fade scars.
- Increases synovial fluid secretion, ensures lubrication and increases joint mobility.
- Deeply moisturizes tissues.
- Helps maintain eye health and improve vision.

Beneficial in:

Osteoarticular diseases (arthritis, rheumatoid arthritis, rheumatism, osteoarthritis), fractures, wounds, premature aging, wrinkles, etc.

Active ingredients / Tablet:

Hyaluronic acid – 100 mg.

Administration:

1 – 2 Tablets per day.

Packaging form:

Flask with 30/60 tablets.

Moisturizes the skin.
Reduces wrinkles and
premature skin aging.
Contributes to the
health of the eyes
and a greater
joint mobility.





SLIM & ENERGY

Innovative association of active ingredients with energizing, revitalizing, tonic and vitaminising action contributing to body weight control.

Actions:

- Stimulates metabolism of fats and contributes in losing body weight.
- Contributes in the normalization of blood circulation, including cerebral circulation.
- Supports the growth of brain performance and reactivity, optimum mental and cognitive activity, and perception.
- Helps the body to adapt under emotional stress and physical effort.
- Contributes in the stimulation of the nervous system, controlling stress-induced fatigue and headaches.

Beneficial in:

Overweight conditions, obesity, hypercholesterolemia, hypertriglyceridemia, mental and physical fatigue, overexertion, stress, decreased work performance.

Active ingredients / Capsule:

Guarana, extract – 150 mg, Golden Root, extract – 100 mg, Green tea, extract – 100 mg, Vitamin C – 100 mg, Choline – 50 mg, Vitamin B3 – 10 mg, Vitamin B1 – 5 mg, Vitamin B2 – 5 mg, Vitamin B5 – 2 mg, Vitamin B6 – 2 mg, Folic acid – 100 mcg, Biotin – 100 mcg, Vitamin B12 – 6 mcg.

Administration: 1 Capsule per day.

Packaging form: Flask with 30 capsules.



EVENING PRIMROSE

1000 mg

The Evening Primrose is a rich source of unsaturated fatty acids, lignin, amino acids, vitamins B, E, trace elements. The product is achieved from organically-certified crops.

Actions:

- Contributes in improving period disorders (menstrual pain, pre-menstrual syndrome) and the effects of menopause.
- Reduces the discomfort caused by menopause, particularly the feeling of hot flashes.
- Supports the normal functioning of the nervous system.
- Contributes in the normalization of the blood cholesterol and the burning of saturated fats.
- Maintains skin elasticity and trophicity.
- Increases vitality and resistance to bad weather.

Beneficial in:

Pre-menstrual syndrome, dysmenorrhea, hormonal disorders, menopause, hypercholesterolemia, acne, eczemas etc.

Active ingredients / Capsule: Evening primrose (*Oenothera Biennis*) * oil – 1000 mg, containing LA/Linoleic acid – 700 mg, GLA / Gamma-Linolenic acid – 90 mg.

* Raw material achieved from organically-certified crops.

Administration:

1 – 2 Capsules per day, after food.

Packaging form: Flask with 30/60 capsules.



SUPER BEAUTY®

Beauty Support Formula

REVITALISED SKIN

REGENERATED HAIR

NAIL GROWTH

Complex Formula: 18 anti-aging ingredients for natural enhanced beauty.

BEAUTY IS HEALTH!

The polluted urban environment is one of the invisible enemies of our body.

Acting as a protective barrier, our skin quickly feels the effect of exposure to environmental aggression. Pollutant particles, sometimes even twenty times smaller than pores, infiltrate the deepest layers of the skin, thereby causing not only swelling and dehydration, but also a cellular reaction leading to a loss of skin elasticity and firmness, hair and nail vitality.

Care products only deal with superficial effects, showing a 20% efficiency in their improvement. 80% of the illnesses having an impact over our natural beauty are caused by a faulty diet and a stressful lifestyle, cigarette smoke and pollution.

A brilliant look must be maintained from the inside to the outside!

**Gets the skin, hair and nails
revitalised through
a 24-hour biological action**



**SUPER BEAUTY HELPS YOU ACHIEVE
BRILLIANT INNER BEAUTY!**

- Protects and repairs daily aggressions caused by environmental factors;
- Offers a healthy skin and allows it to efficiently produce collagen and elastin;
- Offers the skin an antioxidant barrier, thereby keeping it shiny and supple;
- Corrects the existing signs of aging and slows down their occurrence;
- Protects the beauty and health of the hair and stimulates its growth;
- Regenerates, nourishes and stimulates nail growth.



BEAUTY & CELLULAR
REGENERATION

BEAUTY FROM WITHIN

BEAUTY RESTORATION

TOTAL CARE®

SUPER BEAUTY®

Beauty Support Formula

SUPER BEAUTY® stimulates body beauty and health due to the 18 NATURAL NUTRIENTS offering the OPTIMUM AMOUNT for maintaining a young and brilliant look:

Collagen – supports skin elasticity, protects the skin against visible signs of aging and contributes to the rapid restoration of epithelial tissue.

Hyaluronic acid – moisturises the skin restoring its suppleness and firmness, reduces wrinkles, helps cell regeneration.

Coenzyme Q10 – energises, regenerates, deeply moisturises and maintains skin firmness, strengthens the skin's natural barrier, reduces the harmful effects of UV rays.

Vitamin C – natural antioxidant, supports the process of collagen and elastin fiber production.

Field Horsetail – holds purifying effects, detoxifies the body and aids in the renewal of cell tissue, while offering the skin with a younger look.

Pomegranate – its antioxidant properties help to delay the signs of aging, naturally brightens the skin, fights skin inflammation and dark spots.

Grape seeds – Resveratrol protects against oxidative stress, tissue damage and inflammation. It improves collagen synthesis and aids in the growth of bone density.

Spirulin – helps to renew the tired appearance of the skin and reduce wrinkles.

Vitamin B1 – also called the "antistress" vitamin, it maintains the muscle tone of the digestive tract and the health of the nervous system, skin, hair, eyes and liver.

Vitamin B2 (Riboflavin) – prevents the damage caused by free radicals, protects the health of the skin and the eyes, reduces swelling, speeds up the healing of wounds and slows down the occurrence of aging signs.

Vitamin B3 (Niacin) – controls the skin's photo-aging, hyper-pigmentation, the appearance of scars, skin texture and pores size.

Vitamin B6 – contributes to the synthesis of anti-aging nucleic acids, the proper functioning of the immune system, mucous membrane, skin and red blood cells.

Folic acid (B9) – repairs and stimulates the growth of hair and nails. Provides glowing skin and reduces pigmentation.

Vitamin B12 – contributes to cellular replication, increases energy levels, improves the state of mind, maintains the skin and hair healthy, improves metabolism and digestion.

Zinc – helps in maintaining hair, skin and nails healthy and fights against skin infection.

Selenium – essential mineral for healthy hair and nails, soothes inflammations and has an antioxidant role.

Iron – stimulates hair and nail growth, offers them shine and maintains a healthy skin colour.

Copper – maintains the natural pigment of hair and skin.

ADMINISTRATION: 1 tablet per day, with food

COSMO PHARM®



TEL.: 021.98.63 / TEL. VERDE: 0800 826 766

Also available on www.cosmopharm.eu



RECOMMENDATIONS ACCORDING TO DISEASE

Paediatrics: Immunostim Junior Syrup; Nose & Throat Syrup; Baby Tusin Syrup; Alergo Junior Syrup; Calcium+D3+B12 Syrup; Visual Junior Syrup; Diarilium; Edible calcium; Premium DHA; Sleepy Head Syrup; Dino Vita Min; Natural Vitamin C Syrup.

Allergies: Alergo Junior; Probiotic Complex; Resvida Resveratrol 100 mg; Mega Biotic.

Eye conditions: Visual Forte; Visual Junior Syrup; Lutein 10mg Zeaxanthin 2 mg; Natural Vitamin C Syrup; Acerola C 500.

Stroke: Memory Max; Neurotonic; Lecithin 1200 mg; Active Q 10 Mega 100 mg; Coenzyme Q 10 200 mg; Vitamin E; Q10 Gel + L-Carnitine +Alpha-Lipoic Acid; Resveratrol Resvida 100mg; Resveratrol 100mg; Garlic Oil 1000 mg; Neuromax.

Alzheimer's Disease: Memory Max, Neurotonic; Lecithin 1200 mg; Ginkgo Max Extract 120mg; Active Q 10 Mega 100 mg; Neuromax; Ashwagandha KSM 66.

Parkinson's: Memory Max, Neurotonic; Lecithin 1200 mg; Ginkgo Max Extract 120mg; 500mg; Resveratrol Resvida 100 mg; Resveratrol 100 mg; Active Q 10 Mega 100mg; Coenzyme Q 10 200 mg; Golden Root Extract 500 mg; Neuromax; Ashwagandha KSM 66.

ADHD (Attention Deficit Hyperactivity Disorder) / Autism/ Down Syndrome: Premium DHA; Lecithin; Premium Lecithin 1200mg; Memory Max; Neuromax®; Superba 2 Krill Oil; Ginkgo Max Extract 120mg; Golden Root Extract 500 mg.

Memory Improvement: Memory Max, Premium DHA; Neurotonic; Lecithin 1200 mg; Ginkgo Max Extract 120mg; Superba 2 Krill Oil; Omega 3 Salmon Oil 1000 mg; Active Q 10 Mega 100 mg; Coenzyme Q 10 200 mg; Neuromax; Ashwagandha KSM 66.

Multiple Sclerosis: Memory Max, Neuromax®; Neurotonic, Lecithin 1200 mg; Alpha-Lipoic Acid+Biotin + Chromium; Active Q 10 Mega 100mg; Coenzyme Q 10 200 mg; L-Carnitine; B Complex; Resvida Resveratrol 100 mg; Resveratrol 100 mg; Magnesium 375+B6 PF.

Stress: Golden Root Extract 500 mg; Memory Max; Neuromax®; Calmo Depresin; 5HTP 100 mg; Magnesium 375+B6 PF; Evening Primrose; Neurotonic; Superba 2 Krill Oil; Ashwagandha KSM 66.

Insomnia: Melatonin 3mg; Melatonin 5 mg; Calmo Depresin.

Addictions (alcohol, tobacco etc): 5 HTP 100 mg.

Anxiety Golden Root Extract 500 mg; Calmo Depresin; 5HTP 100 mg; Memory Max; Neurotonic; Sleepy Head Syrup.

Depression: Golden Root Extract 500 mg; 5 HTP 100 mg; Memory Max; Lecithin 1200mg.

Acufene (Tinitus): Ginkgo Max Extract 120 mg; Memory Max; Neuromax; Neurotonic; Cordyceps 300mg; Active Q10 Mega 100mg; Coenzyme Q 10 200mg; Resvida Resveratrol 100 mg.

Lung disorders: Baby Tusin Syrup; Astragalus Extract 450mg; Cordyceps 300mg; Reishi+Shiitake+Maitake; Active Q10 Mega 100mg.

Cardiovascular illnesses: Active Q 10 Mega 100mg; Coenzyme Q 10 200mg; Q10 Gel +L-Carnitine + Alpha-Lipoic Acid; Resvida Resveratrol; Resveratrol 100mg; L-Carnitine; Superba 2 Krill Oil; Omega 3-6-9 Flax Seed Oil 1000mg; Hemp Oil; Omega 3-6-9 Complex 1206 mg; Omega 3 Fish Oil 1005 mg; Omega 3 Salmon Oil 1000mg; Nattokinase Serrapeptase.

Atherosclerosis: Active Q 10 Mega 100mg; Coenzyme Q 10 200mg; Q10 Gel +L-Carnitine + Alpha-Lipoic Acid; Alpha-Lipoic Acid+Biotin + Chromium; Resveratrol Resvida; Resveratrol 100 mg; Odourless Garlic; L-Carnitine; 500mg; Venotonic Complex; Superba 2 Krill Oil; Omega 3-6-9 Flax Seed Oil 1000mg; Omega 3-6-9 Complex 1206 mg; Omega 3 Fish Oil 1005 mg; Omega 3 Salmon Oil 1000mg; Nattokinase Serrapeptase.

Arterial hypertension: Active Q 10 Mega 100mg; Coenzyme Q 10 200 mg; Alpha-Lipoic Acid+Biotin + Chromium; Odourless Garlic; Resveratrol Resvida; Resveratrol 100 mg; Superba 2 Krill Oil; Omega 3-6-9 Flax Seed Oil 1000mg; Hemp Oil; Omega 3-6-9 Complex 1206 mg; Omega 3 Fish Oil 1005 mg; Omega 3 Salmon Oil 1000mg.

Hypercholesterolemia & Hypertriglyceridemia: Hepatic Detoxifier; Milk Thistle 14000 mg; Milk Thistle Forte; Omega 3-6-9 Complex 1206 mg; Odourless Garlic; Omega 3-6-9 Flax Seed Oil 1000 mg; Hemp Oil; Omega 3 Salmon Oil 1000 mg; Omega 3 Fish Oil 1005 mg; Q10 Gel + L-Carnitine + Alpha-Lipoic Acid; Alpha-Lipoic Acid+Biotin + Chromium; Cordyceps 300 mg.

Diabetes: Diabestop; Alpha-Lipoic Acid+Biotin + Chromium; Active Q 10 Mega 100 mg; Coenzyme Q 10 200 mg; Resveratrol 100 mg; Resvida Resveratrol 100 mg.

Hypothyroidism: Tirostim; Liquid Calcium; Calcium + Vitamin D3.

Obesity: L-Carnitine 500 mg; 5 HTP; Hepatic Detoxifier; Omega 3-6-9 Complex 1206 mg; Omega 3-6-9 Flax Seed Oil 1000 mg; Renox Renal Detox; Green Tea; Coenzyme Q 10 200 mg; Active Q10 Mega 100mg; Q10 Gel +L-Carnitine + Alpha-Lipoic Acid; Alpha-Lipoic Acid+Biotin + Chromium; Aloe Vera.

Hepatic Disorders: Cosm Enzyme; Hepanox Protect Detox; Milk Thistle 14000 mg; Milk Thistle Forte; Aloe Vera; Omega 3-6-9 Flax Seed Oil 1000 mg; Hemp Oil; Essential Vita Min; Lecithin 1200mg.

Biliary lithiasis: Cosm Enzyme; Fibers, Aloe Vera.

Pancreatitis: Alpha-Lipoic Acid+Biotin + Chromium; Cosm Enzyme; Aloe Vera; Diabestop.

Detoxification: Hepanox Protect Detox; Renox Renal Detox; Green Tea; Milk Thistle Forte; Milk Thistle; Aloe Vera; Curcumin + Piperine; Omega 3-6-9 Flax Seed Oil 1000 mg; Hemp Oil.

Intestinal Imbalance: Probiotic Complex; Fibres; Mega Biotic.

Constipation: Herbolax; Mega Biotic; Fibres; Probiotic Complex.

Digestive halitosis: Probiotic Complex; Fibres; Cosm Enzyme; Aloe Vera; Mega Biotic.

Haemorrhoids: Venotonic Complex; Aloe Vera; Fibres.

Colitis / Irritable bowel syndrome: Probiotic Complex; Fibres; Cosm Enzyme; Mega Biotic.

Diarrhoea: Probiotic Complex; Diarilium; Mega Biotic.

Lactose Intolerance: Probiotic Complex; Fibres; Cosm Enzyme; Aloe Vera; Mega Biotic.

Anorexia: 5 HTP 100 mg; Multivitamin Multimineral.

Viral diseases & Immunity: Imunostim; Vitamin D3; Imunostim Junior Syrup; Mega Biotic; Acerola C 500; Nose & Throat Syrup; Baby Tusin Syrup; Natural Vitamin C Syrup; Echinacea Extract 500 mg; Astragalus Extract 450 mg; Probiotic Complex; Aloe Vera.

Low immunity: Imunostim; Imunostim Junior Syrup; Natural Vitamin C Syrup; Vitamin D3; Echinacea Extract 500mg; Astragalus Extract 450 mg; Probiotic Complex; Mega Biotic; Acerola C 500; Aloe Vera; Cordyceps; Reishi+Shiitake+Maitake; Active Q 10 Mega 100mg; Coenzyme Q 10 200 mg.

Convalescence: L-Arginine 1000mg; Korean Ginseng; Siberian Ginseng; Multimineral Multivitamin; Dino Vita Min; Geriatric Vita Min; Essential Vita Min.

Lymphatic diseases: Venotonic Complex; Resvida Resveratrol 100 mg; Resveratrol 100 mg; Coenzyme Q 10 200 mg; Active Q 10 Mega 100 mg.

Edema: Venotonic Complex; Resvida Resveratrol 100mg; Astragalus Extract 450 mg.

Poor blood circulation: Venotonic Complex; Ginkgo Max Extract 120mg; Neurotonic, Neuromax.

Varicose veins/ Thrombophlebitis: Venotonic Complex; Cordyceps 300 mg; Resvida Resveratrol 100 mg; Omega 3- 6-9 Complex 1206 mg; Omega 3-6-9 Flax Seed Oil 1000 mg; Hemp Oil; Omega 3 Salmon Oil 1000 mg; Omega 3 Fish Oil 1005 mg; Natural Vitamin C Syrup; Nattokinase Serrapeptase.

Osteoarticular disorders: MSM 1000 mg; Curcumin + Piperine 95%; Vegetal Glucosamine 750mg; Antiarthritic; Hyaluronic acid 100 mg; Arthroforte; Arthroforte Cream; Liquid Calcium; Calcium + Vit D3; Cal+Mag+Zinc; Edible calcium; Calcium +D3+B12 Syrup; Vitamin D 3 2000 UI.

Osteoporosis: Vegetal Glucosamine 750mg; MSM 1000mg; Arthroforte; Arthroforte Cream; Curcumin C3 Extract 400mg; Curcumin + Piperine 95%; Vitamin D3 2000 UI; Liquid Calcium; Calcium + Vit D3; Cal+Mag+Zinc; Hyaluronic acid 100mg.

Pregnancy & Breastfeeding: Prenatal; Premium DHA.

Amenorrhea & Menopause: Evening Primrose; Golden Root Extract 500 mg; Natural Vitamin E.

Acne: Aloe Vera; Evening Primrose; Omega 3-6-9 Flax Seed Oil 1000 mg; Omega 3-6-9 Complex 1206 mg; Hemp Oil; Hyaluronic acid 100 mg; Alpha-Lipoic Acid + Biotin + Chromium; Hepanox Protect Detox; Milk Thistle Forte; Superba 2 Krill Oil, Probiotic Complex; Super Beauty; Mega Biotic; Vitamin E; Renox Renal Detox.

Cramps: Cal+Mag+Zinc ; Magnesium 375.

Cystitis/ Urinary infections: UroForte; Natural Vitamin C Syrup; Renox Renal Detox; Acerola C 500.

Cancer/ Oncology disorders: Cordyceps 300mg; Astragalus Extract 450 mg; Resveratrol Resvida 100 mg; Resveratrol 100 mg; Active Q 10 Mega 100 mg; Coenzyme Q 10 200 mg; Q10 Gel +L-Carnitine + Alpha-Lipoic Acid; Aloe Vera; Curcumin + Piperine 95%; Odorless Garlic.

Energizing: Slim & Energy; Multivitamin Multimineral; Siberian Ginseng, Premium Siberian Ginseng; Korean Ginseng; Neuromax; Ashwagandha KSM 66; L-Carnitine.

Vitamins & Minerals: Multiminerals; Multivitamin Multimineral; Geriatric Vita Min; Essential Vita Min; Dino Vita Min; Calcium + D3+B12 Syrup; Edible calcium; Liquid Calcium; Calcium + Vit D3; Cal+Mag+Zinc; Magnesium 375+B6 PF; Vitamin D3 2000 UI; Vitamin E; Acerola C 500.

Sports performance: BCAA 500mg; L-Arginine 1000 mg; L-Carnitine; Vegetal Glucosamine 750 mg; MSM 1000 mg; Multimineral Multivitamin; Cordyceps; Korean Ginseng 1000mg; Siberian Ginseng 1000 mg; Active Q10 Mega 100 mg; Coenzyme Q 10 200 mg, Ashwagandha KSM 66.

Prostate adenoma: Prostatofort.

Masculinity: Korean Ginseng; Potent; Siberian Ginseng; Prostatofort, Viril.

THE ROLE OF VITAMINS IN THE BODY

Vitamin

Role in the body

<u>A (Beta carotene)</u>	Antioxidant; increases visual accuracy; maintains tissue integrity; grows immunity; keeps the skin, hair and nails healthy; speeds up the healing of wounds; prevents blindness.
<u>C</u>	Antioxidant; role in the redox system; collagen biosynthesis; iron intake; increases immunity (anti-toxic, anti-infectious action); protects blood vessels, hair and skin; prevents scurvy, cataract.
<u>D</u>	Keeps bones and teeth healthy; normal calcium balance and serum calcium; prevents rickets, osteoporosis and osteomalacia.
<u>E</u>	Antioxidant; vasodilator and antiaggregant; maintains the flexibility of cardiac arteries; role in reproduction and proper prostate operation; keeps hair and skin healthy; prevents the risk of myocardial ischemia.
<u>K</u>	Role in the formation of prothrombin; blood coagulation; prevents bleeding and haemorrhage.

Vitamin B complex



Acts synergistically in the efficient functioning of the nervous system. Conversion of lipids and carbohydrates into energy.

<u>B₁</u>	Muscle coordination; blood circulation; intellectual performance vitamin; diuretic.
<u>B₂</u>	Tissue regeneration and oxygenation, forming of antibodies; increases visual accuracy.
<u>B₃</u>	Detoxification reactions; health of the digestive apparatus and blood capillaries; prevents pellagra.
<u>Folic Acid</u>	Nucleic acid synthesis; cellular growth and division; haematopoiesis; reduces the risk of congenital malformations in the foetus; prevents macrocytic Anaemia.
<u>B₅</u>	Enzyme reactions, hormone steroids; positively stimulates the health of skin and hair.
<u>B₆</u>	Coenzyme in the metabolism of amino acids and fat acids; forming of antibodies and red blood cells; natural diuretic; prevents muscle spasms and peripheral neuritis.
<u>Biotin</u>	Helps in the use of other vitamins; energy production; keeps hair and skin healthy.
<u>B₈ Choline</u>	Lipotropic effect – eliminates liver fats and toxic substances from the body, decreases cholesterol levels; formation of lecithin; prevents atherosclerosis and alcoholic cirrhosis.
<u>Inositol</u>	Lipotropic effect; synthesis of phospholipids in the nervous cell membrane; formation of lecithin; prevents eczema.

B₁₀ PABA	Haematopoiesis; protects the skin against the sun; maintains the natural colour of hair; prevents formation of wrinkles and greying.
B₁₂	Optimal functioning of marrow cells, haematopoiesis; in children, it stimulates appetite, improves memory; prevents Anaemia.

Minerals



Role in the body

Fe	Essential in haematopoiesis; production of haemoglobin; carries O ₂ to the muscles; prevents Anaemia.
Ca	Bone and teeth health; transmission of nervous impulses; rhythmicity of heart beats; muscle contraction-relaxation process; prevents rickets, osteoporosis.
Mg	Health of the skeleton, transmission of the nerve impulse, muscle contraction-relaxation, controls stress and depression, prevents the occurrence of kidney stones and gallstones.
Zn	Speeds up the healing of wounds, maintains taste and smell sensitivity; immunostimulant action; prevents prostate adenoma; protects the liver.
Se	Antioxidant; reduces the risk of coronary diseases; increases life expectancy and delays degenerative aging processes; role in male fertility.
P	Enters the structure of bone and teeth; used in producing energy; transmission of nerve impulses; memory.
I	Necessary for regulating the thyroid function; essential for thyroid hormones controlling the base and growth; prevents endemic goitre, cretinism.
Cr	Cholesterol metabolism; reduces blood sugar levels; increases body energy; adjusts body weight; prevents diabetes.
Mn	Proteic and lipidic metabolism; energy production process; harmonious skeletal development; reproduction function; adjusts blood sugar levels; immunostimulant action; enzyme activator.
Cu	Prevents rhythm disorders, regulates blood pressure and cholesterol levels; protects bones and conjunctive tissue; increases immunity; the use of iron prevents Anaemia.
Bor	Keeps bones and teeth healthy; improves reflexes; prevents osteoporosis, rickets.
K	Adjusts the osmotic pressure in the cells and the acid / base balance, decreases blood pressure; interferes in the transmission of nerve impulses, muscle contraction and hormone secretion; offers protection against strokes.
Mo	It plays an enzymatic part in metabolizing the iron, carbohydrates and fats.
Va	Useful in the metabolism of blood sugar; inhibits the occurrence of cholesterol; prevents cardiac diseases.



RANGE of PRODUCTS

alphabetic

PREMIUM PRODUCTS

5HTP 100 mg / 30cps / 60cps	19
ACEROLA C 500 + bioflavonoide / 20 tb	66
ACID HIALURONIC 100 mg / 30tb / 60tb	86
ASTRAGALUS EXTRACT 450mg / 30cps / 60cps	64
BCAA 500 mg / 30 tb / 60tb	38
COENZIMA Q10 200 mg / 30 cps	26
CORDYCEPS 300MG / 30cps / 60cps	64
ECHINACEA EXTRACT 500mg / 30cps / 60cps	63
GINKGO MAX EXTRACT 120mg / 30cps / 60cps	17
GINSENG COREAN 1000mg / 30tb / 60cps	71
GINSENG SIBERIAN 1000MG / 30tb / 60cps	72
GLUCOZAMINĂ VEGETALĂ 750mg / 30tb / 60tb	46
L-ARGININĂ 1000 mg / 30tb / 60tb	38
L-CARNITINĂ 500mg / 30tb	39
LECITINĂ 1200mg / 30cps / 60cps	17
LUMINIȚA NOPȚII 1000mg / 30cps / 60cps	87
LUTEINĂ 10mg ZEAXANTINĂ 2mg / 30cps / 60cps	41
MELATONINĂ 5mg / 30cps	20
MSM 1000mg / 30tb / 60tb	46
NATTOKINAZĂ SERRAPEPTAZĂ / 30cps	30
OMEGA 3-6-9 COMPLEX 1206mg / 30cps / 60cps	35
OMEGA 369 ULEI IN 1000mg / 30cps / 60cps	36
REISHI SHIITAKE MAITAKE / 30cps / 60cps	65
RESVERATROL 100mg / 30cps	28
RHODIOLA EXTRACT 500mg / 30cps / 60cps	19
SILIMARINĂ 14000mg / 30tb	59
ULEI DE KRILL 500mg / 30cps	33
USTUROI FĂRĂ MIROS 1000mg / 30cps / 60cps	31
VENOTONIC COMPLEX / 30tb / 60tb	31
VIRIL / 4 tb	77
VITAMINA D3 2000 UI / 60cps	65
VITAMINA E NATURALĂ 400 UI / 30cps	83

STANDARD PRODUCTS

ACID ALFA LIPOIC+BIOTINĂ+CR / 30cps	28
ACTIVE Q10 MEGA 100mg / 10cps / 30cps	27
ALOE VERA EXTRACT 25mg / 30cps	60
ANTIARTHRITIC® / 30cps	45
ARTROFORTE® / 30cps	44
ARTROFORTE CREAM® / 100ML	44
CALCIU LICHID / 30 cps	45
CALCIU+VITAMINA D3 / 30tb	47
CAL-MAG-ZINC / 30tb	47
CALMO DEPRESIN / 30cps	18
CEAI VERDE EXTRACT 2000mg / 30cps	83
COSM ENZIME(7 ENZIME DIGESTIVE) / 10drj	52
DIABESTOP / 30cps	50
ESENȚIAL VITA-MIN / 30tb	79
FIBRE /30tb	52
GERIATRIC VITA-MIN / 30tb	80
GINSENG SIBERIAN 500mg / 30cps	72
HEPANOX PROTECT DETOX® / 30cps	61
HERBOLAX / 10tb / 30tb	53
IMUNOSTIM / 30tb	63
L-CARNITINĂ 450mg / 30cps	39
LECITINĂ 1200	18
MAGNEZIU 375 + B6 / 30tb	22
MAGNEZIU+B6 / 30tb	22
MELATONINA 3mg / 10cps / 30cps	20
MEMORY MAX /30cps	16
MULTIMINERALE (COMPRIMATE) / 30tb	80
MULTIVITAMINE ȘI MULTIMINERALE / 30tb	81
NEUROTONIC / 30cps	16
OMEGA 3 ULEI DE SOMON 1000mg / 30cps	34
OMEGA 3 ULEI PEȘTE 1005mg / 30cps	34
POTENT / 30cps	77
PRENATAL / 30tb	79
PROSTATOFORT / 30cps	69
Q10+L-CARNITINĂ+ALFA LIPOIC / 30cps	26
RESVERATROL RESVIDA 100mg / 30cps	29
SILIMARINĂ FORTE ECHIV. 2500mg / 30tb	59
SLIM & ENERGY / 30cps	87
TIROSTIM / 30cps	50
ULEI DE CÂNEPĂ 1000mg / 30cps	35
UROFORTE / 30cps	69
VIZUAL FORTE / 30tb	41

PAEDIATRICS

advanced kids®

ALERGO JUNIOR / 125ml	8
BABY TUSIN / 125ml	11
CALCIU D3+B12 / 125ml	6
CALCIU MASTICABIL / 30tb	6
DHA PREMIUM / 30CPS	7
DIARILIUM / 125ml	12
DINO VITA-MIN / 30tb	13
IMUNOSTIM JUNIOR / 125ml	8
NAS & GÂT / 125ml	9
SOMNIC 125ml	9
VITAMINA C NATURALĂ / 125ml	11
VIZUAL JUNIOR / 125ml	12

TOTAL CARE® PRODUCTS

ASHWAGANDHA KSM 66 / 30cps	73
NEUROMAX / 30cps	21
SUPER BEAUTY / 30 cps	85

TOTAL CLEANSE® PRODUCTS

RENOX RENAL DETOX® / 30 cps	58
HEPANOX PROTECT DETOX® / 30cps	61

TOTAL DEFENSE® PRODUCTS

CURCUMIN+PIPERINE 95% / 30 cps	43
MEGA BIOTIC / 10 cps	55
PROBIOTIC COMPLEX 10mld UFC / 30cps	54

Health from nature®



COSMO PHARM®
www.cosmopharm.eu



Tel.: 021 9863; 0372372200-99 facebook.com/CosmopharmRomania instagram.com/cosmopharm.eu